

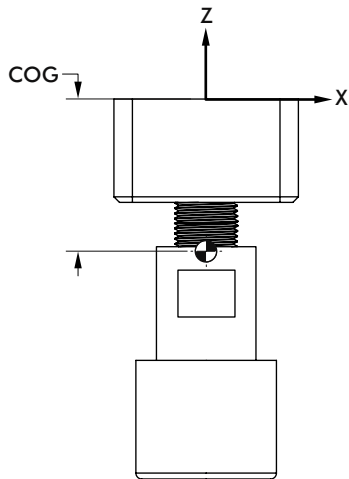
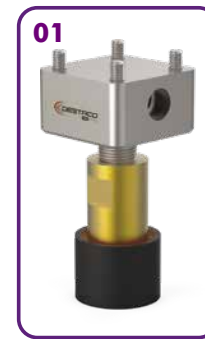
# ROBOT MAGNETIC GRIPPING SOLUTIONS

Magnetic Gripper Kit | Ordering Information



MG-050-XX Magnetic Gripper Kit

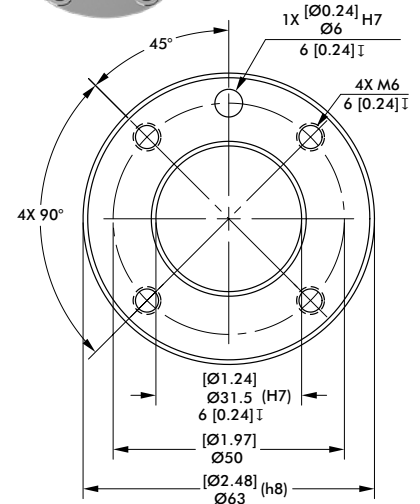
Adapter Model: **MG** — Robot ISO Size: **050** — Type: **XX**



Specifications:	Units	MG-050-01	MG-050-02
Max Payload without Boot:	Kg [lb]	0.25 [0.5]	1.0 [2.2]
Max Payload with Boot:	Kg [lb]	0.75 [1.75]	3.0 [6.6]
Boot Material:		Polyurethane	Polyurethane
Gripper Material:		Aluminum	Aluminum
Minimum Operating Pressure:	bar [psi]	2 [30]	2 [30]
Maximum Operating Pressure:	bar [psi]	4 [60]	4 [60]
Weight:	Kg [lb]	0.31 [.69]	0.57 [1.26]
COG (Centre of Gravity) [X] [Y] [Z]	mm	[-0.15] [0] [-44.21]	[-0.08] [0.17] [-58.46]
Moment of Inertia @ COG -I <sub>XX</sub>	[Kg-mm <sup>2</sup> ]	485.23	814.02
Moment of Inertia @ COG -I <sub>YY</sub>	[Kg-mm <sup>2</sup> ]	484.53	832.01
Moment of Inertia @ COG -I <sub>ZZ</sub>	[Kg-mm <sup>2</sup> ]	96.65	324.3

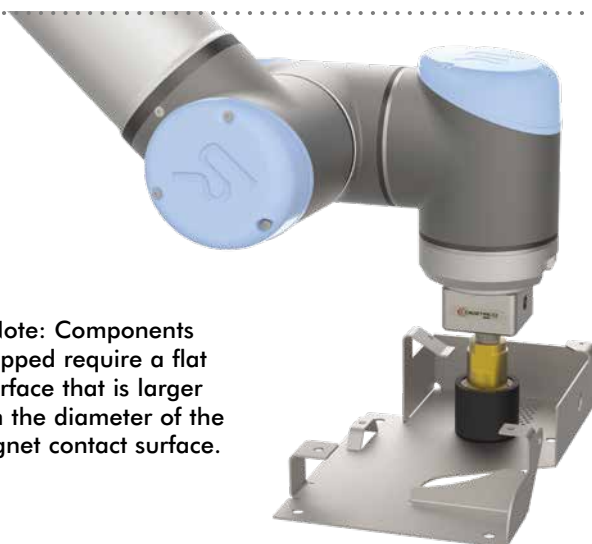
### MG-050-XX Magnetic Gripper Kit - Robot Compatibility

Robot Manufacturer	Model
GENERIC	Any model with ISO-9409-1-50-4-M6 Pattern
ABB	CRB 15000
AUBO	I3, I5, I7, I10
DOBOT	CR - 5
Doosan Robotics	M0609,M1509,M1013,M0617
ESI	C-7, C-15
F&P PERSONAL ROBOTICS	P-ROB 2R-24V, 48V
FRANKA EMIKA	PANDA
HAN'S ROBOTS	ELFIN 3, 5, 10
HANWHA PRECISION MACHINERY	HCR-3, 5, 12
JAKA/KUNLIN	ZU 7, 12
KAWADA INDUSTRIES	NEXTAGE
KUKA	LBR iiwa 7 R800, LBR iiwa 14 R820
MODBOT	Robot, SCARA
Omron TM	TM 5 - 700, TM 5 - 900, TM 12, TM 14
RAINBOW ROBOTICS	RB5
REIS	RV10-6, RV20-6
ROZUM	PULSE 75, 90
SIASUN	GCR5, GCR14, GCR20, SCR3, SCR5
STAUBLI	TX2 90, TX2 TOUCH 90, TX2 TOUCH 90L, TX2 TOUCH 90XL
TECHMAN	TM5M-700, TM5M-900, TM12M, TM14M
UNIVERSAL ROBOTS	UR3, UR5, UR10, UR16



ISO-9409-1-50-4-M6  
Robot Mounting Pattern

Note: Components gripped require a flat surface that is larger than the diameter of the magnet contact surface.



### Mag-Lift Magnetic Gripper Working

Activate air on or off to release or grip ferrous material with these grippers

- Air is supplied when approaching workpiece
- Remove air when magnet is in close proximity to workpiece
- With air removed, grip is maintained allowing ferrous material to be moved to another location
- Activate air pushes magnet away to quickly release work piece

# ROBOT MAGNETIC GRIPPING SOLUTIONS

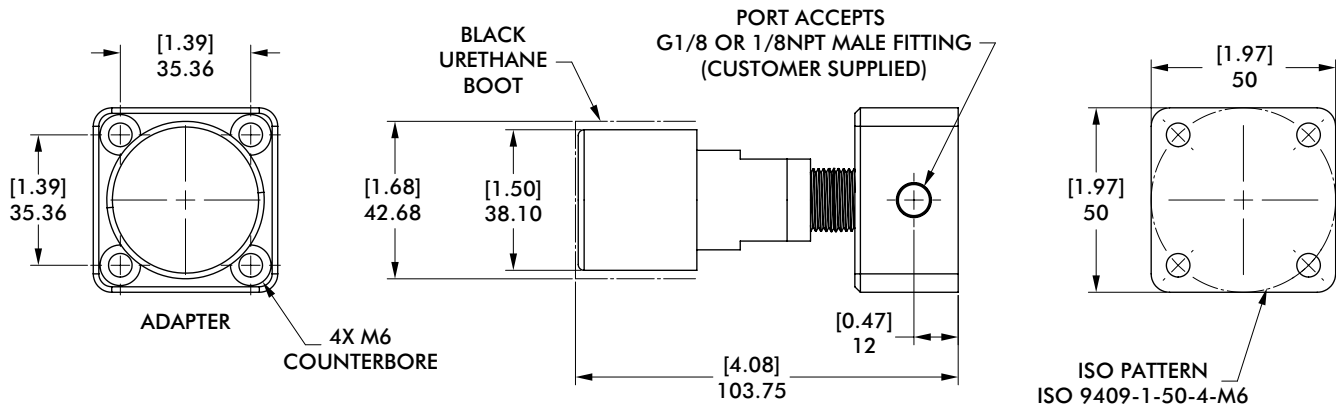
Magnetic Gripper Kit | Dimensions and Specifications



## MG-050-01 Magnetic Gripper Kit



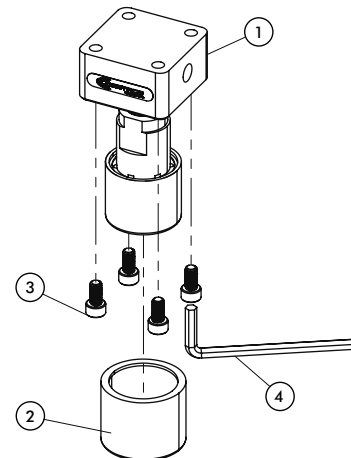
mm [INCH]  
  
THIRD ANGLE  
PROJECTION



## MG-050-01 Magnetic Gripper Kit Components

Item	Description	Quantity
1	Magnetic Gripper	1
2	Black Urethane Boot for 1.5" Dia	1
3	SCHS, M6 x 12mm, Stainless, Patchlock	4
4	Wrench, Allen, 5mm Hex	1

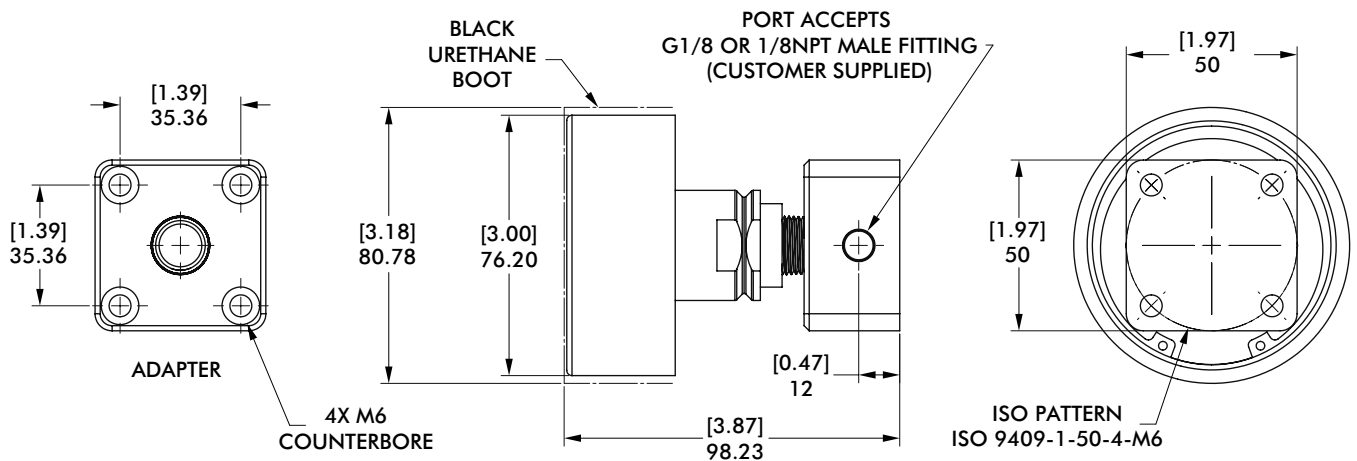
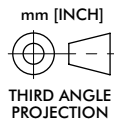
All hardware and tools are provided in the kit



# ROBOT MAGNETIC GRIPPING SOLUTIONS

Magnetic Gripper Kit | Dimensions and Specifications

MG-050-02 Magnetic Gripper Kit



## MG-050-02 Magnetic Gripper Kit Components

Item	Description	Quantity
1	Magnetic Gripper	1
2	Black Urethane Boot for 3" Dia	1
3	SCHS, M6 x 12mm, Stainless, Patchlock	4
4	Wrench, Allen, 5mm Hex	1

All hardware and tools are provided in the kit

