

Service Manual

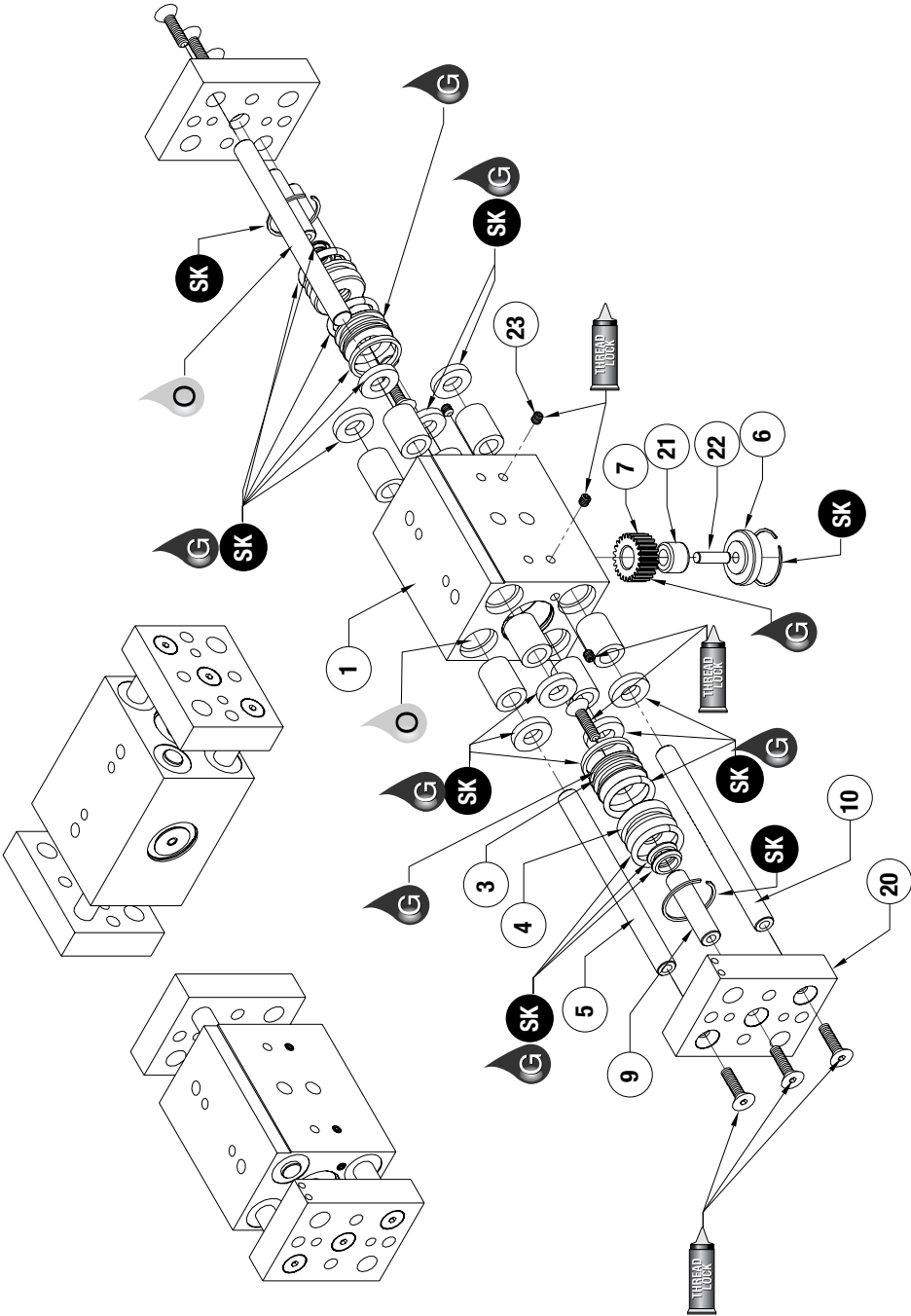
ROBOHAND | RPW Series



WARNING: This is a controlled document. It is your responsibility to deliver this information to the end user of the Destaco Robohand product. Failure to deliver this could result in your liability for injury to the user or damage to the machine. For copies of this manual, call your Customer Service Representative at 1.248.836.6700

RPW SERIES

Parallel Grippers | Maintenance and Assembly Procedure



Item	Qty	Name
01	1	Body
03	2	Piston
04	2	Cap
05	2	Shaft
06	1	Gear Cover
07	1	Gear
09	2	Shaft, Piston
10	2	Shaft, Gear
20	2	Block, End W/ Target Holes
21	1	Bearing, Needle
22	1	Dowel Pin
23	1	Ball

NOTE: Contact the Robohand Sales Department for a complete spare parts list with order numbers and prices.

Assembly Procedure

- 1) Lubricate and install seals.
- 2) Install pistons and shafts.*
- 3) Place piston caps and retaining rings into body
- 4) Install tooling plates and shafts
- 5) Place bearing, shaft, and gear** into body and install cap and retaining ring for sync. version:
 - a) For disassembly, use magnet to pull gear out of body.
 - b) Install 2 rack shafts with teeth facing syncing gear.

Non-Synchronous Procedure

- 1) Take RPW synchronous gripper and remove the retainer ring and gear cover.
- 2) Slide out dowel pin and bearing.
- 3) Remove gear from gripper. (a magnet is often very helpful in removing the gear.)
- 4) Replace the dowel pin, gear cover, and retainer ring. The gripper is now non-synchronous.

SK Seal Repair Kit Order #'s See Product Data Sheets



Seal Kit Items



Thread Locker



Krytox™ Lubricant



Lightweight Machine Oil



Teflon® Based Grease

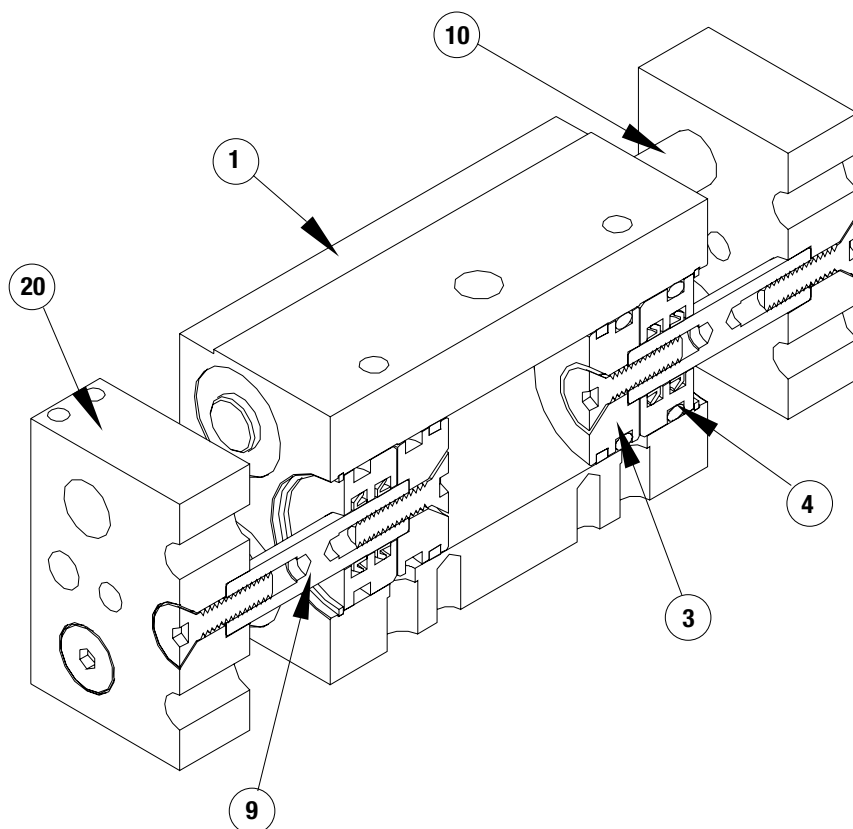


Super Bonder



Third Angle Projection

Parallel Grippers | Maintenance and Assembly Procedure

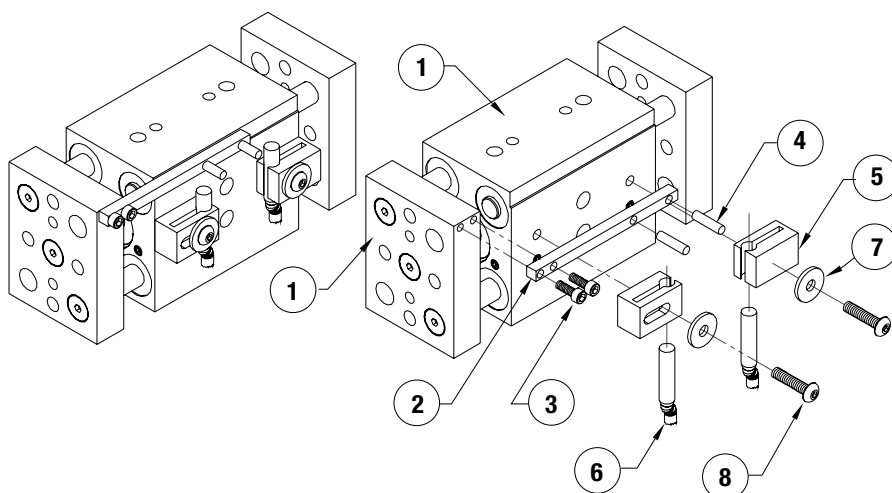


Item	Qty	Name
01	1	Body
03	2	Piston
04	2	Cap
05	2	Shaft
06	1	Gear Cover
07	1	Gear
09	2	Shaft, Piston
10	2	Shaft, Gear
20	2	Block, End W/ Target Holes
21	1	Bearing, Needle
22	1	Dowel Pin
23	1	Ball

NOTE: Contact the Robohand Sales Department for a complete spare parts list with order numbers and prices.

Accessory Installation & Adjustment Instructions

Install target as shown, install sensors as shown, adjust for proper end of stroke sensing.



Seal Kit
Items



Thread
Locker



Krytox™
Lubricant



Lightweight
Machine Oil



Teflon® Based
Grease



Super
Bonder



Third Angle
Projection



GLOBAL LOCATIONS

NORTH AMERICA

Corporate Headquarters

Auburn Hills, Michigan
Toll Free: 1.888.DESTACO
Marketing: marketing@destaco.com

Global Technology Center

Auburn Hills, Michigan
Tel: 1.248.836.6700
Customer Service: customerservice@destaco.com

Mt. Juliet, Tennessee
Tel: 1.888.DESTACO
Customer Service: customerservice@destaco.com

Wheeling, Illinois
Tel: 1.800.645.5207
Customer Service: camco@destaco.com

Red Wing, Minnesota (Central Research Laboratories)
Tel: 651.385.2142
Customer Service: sales@centres.com

ASIA

Bangkok, Thailand
Tel: +66-2-326-0812
Customer Service: info@destaco.com

Shanghai, China
Tel: +86-21-6081-2888
Customer Service: china@destaco.com

Bangalore, India
Tel: +91-80-41123421-426
Customer Service: india@destaco.com

EUROPE

Oberursel, Germany
Tel: +49-6171-705-0
Customer Service: europe@destaco.com

Sainte Florine, France
Tel: +33-4-73545001
Customer Service: france@destaco.com

Wolverhampton, United Kingdom
Tel: +44-1902-797980
Customer Service: uk@destaco.com

Sant Boi de Llobregat, Spain
Tel: +34-936361680
Customer Service: spain@destaco.com

Uithoorn, Netherlands
Tel: +31-297285332
Customer Service: benelux@destaco.com