



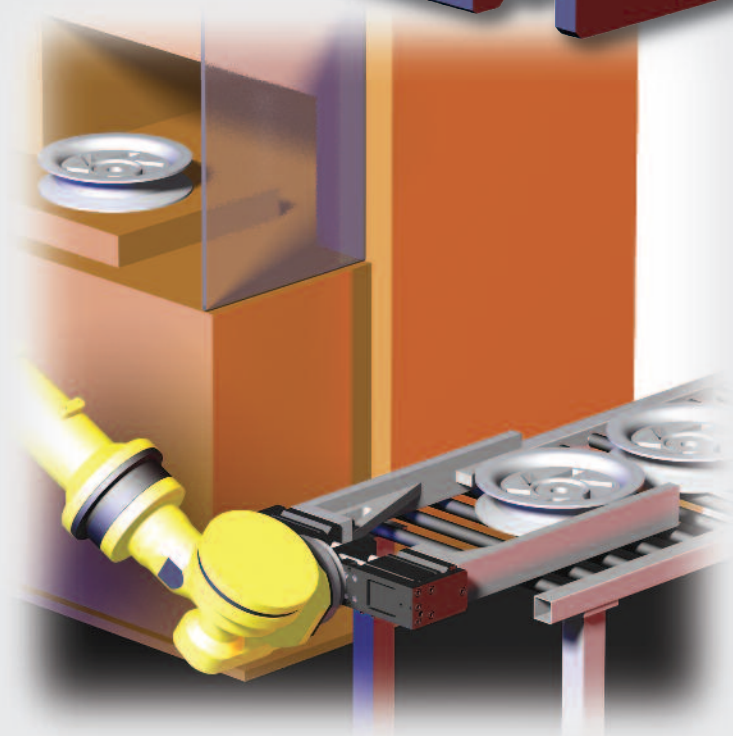
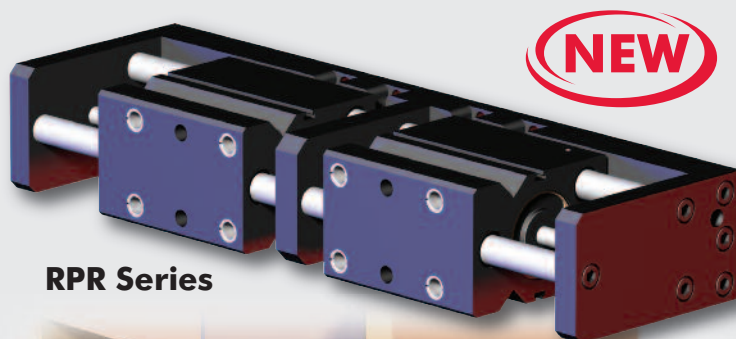
GRIPPING INNOVATION

Gladiator Heavy-Duty Parallel Grippers

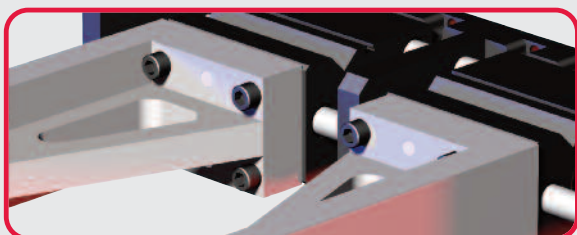
Battle-Tested Design Capable of Surviving the Toughest Applications

KEY FEATURES:

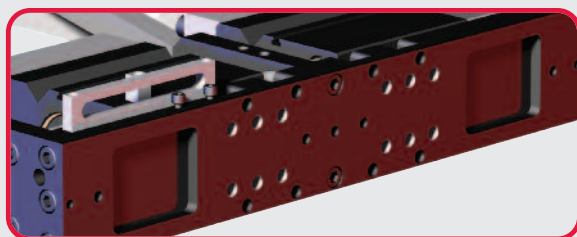
- Wide Body and Long Stroke Design
- Built-In Rod Wipers
- Optional Stainless Steel Hardware
- High Temperature Design Available
- Optional Rod Lock
- Optional Non-Synchronous Jaws
- Analog Position feedback Sensor
- 200mm Stroke Standard



Ideal for secure gripping of large heavy parts in CNC machining, foundry, high temperature and harsh environment applications



Rigid Design and Full Body Support of Jaws
Allows for longer finger lengths



Standard Mounting Pattern
Allows for interchangeability with other grippers

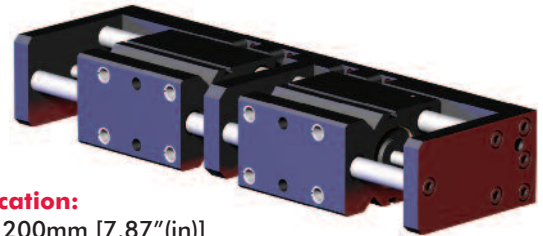


Precisely positioning our customers for productivity.



Gladiator RPR Series Heavy-Duty Parallel Gripper

RPR-63-200/RPR-63M-200

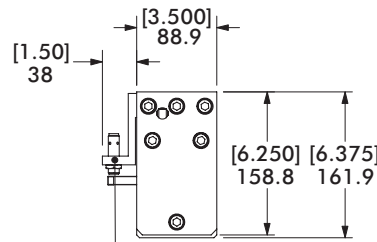
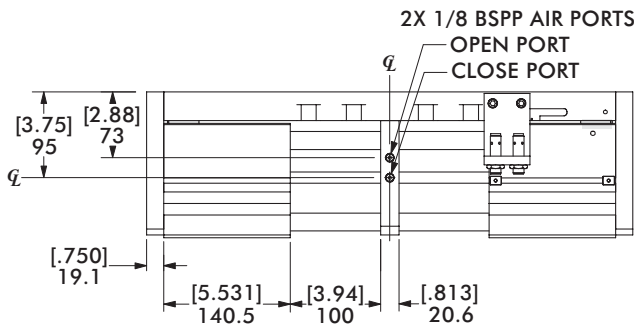
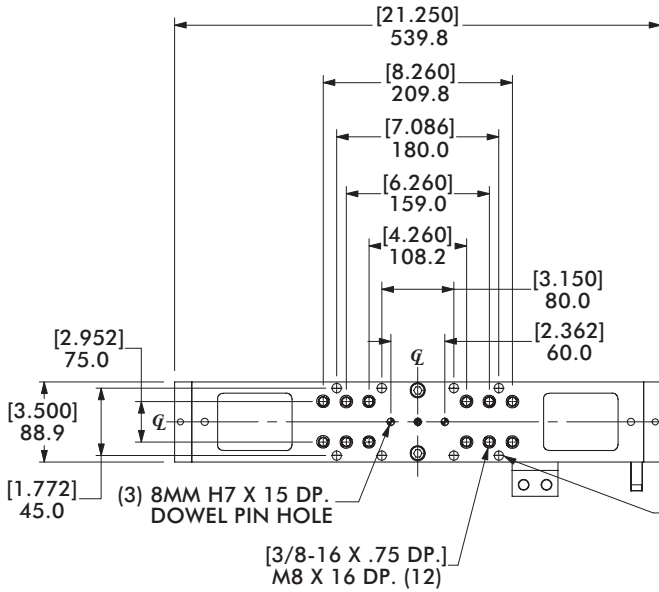


Specification:

- Stroke: 200mm [7.87"(in)]
- Temperature Range: -35° - 80°C [-30° - 180°F]
- Pressure Range: 3-7 bar [40-100 psi]
- Total Rated Grip Force (F) @ 7 bar [100 psi]: 3520 N [800 lb]
- Max. Effective Finger Length (L): 500mm [20"(in)]

Loading Capacity (FIG "A"):

- Max. Tensile **T**: 15570 N [3500 lb]
- Max. Compressive **C**: 15570 N [3500 lb]
- Max. Moment (**M_x**/**M_z**): 825 Nm [7500 in.-lb.]
- Max. Moment (**M_y**): 990 Nm [9000 in.-lb.]



SENSOR BRACKET, TARGETS AND SENSORS ARE NOT INCLUDED WITH GRIPPER (SHOWN FOR REFERENCE ONLY)

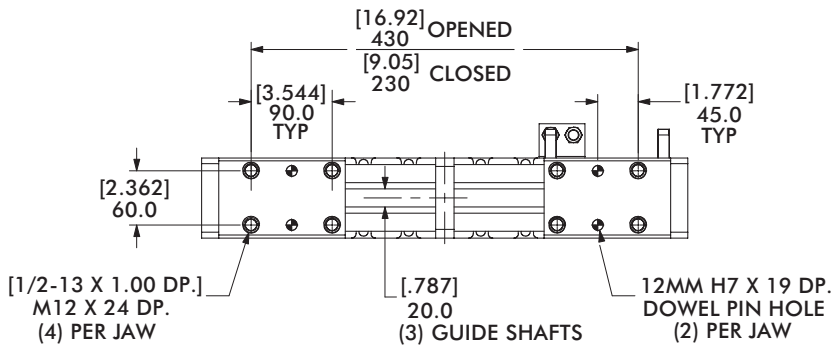
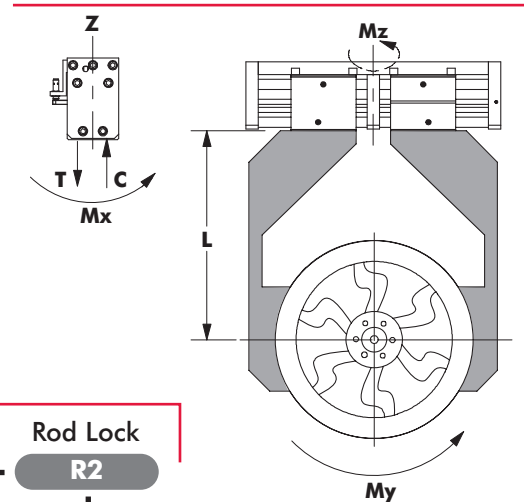


FIG. A



Optional Features (Leave Blank for Standard)

Model	Synchronization	Seals	Hardware	Rod Lock
RPR - 63-200	NS	V	S	R2
63-200 Imperial	NS Non Synchronized	V Hi-Temp Seals	S Stainless Steel	R1-RS (1) Rod Lock (Right Side)
63M-200 Metric				R1-LS (1) Rod Lock (Left Side)
				R2 Double Rod Lock

Base Model (All Standard): **RPR-63-200** Configured Model: **RPR-63-200-NS-V-S-R2**

Sensor and Pneumatic Accessories ordered separately
Please see Automation Catalog pages 1.224-1.225 for details

RBH_RPR-63-200-F_0311