

Series 601 Product Overview

Features:

- Compact straight line action clamp

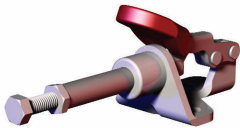
Applications:

- Assembly
- Testing
- Soldering
- Gluing

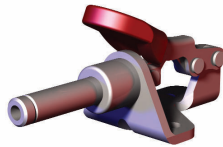
Also Available:

See page 8.1 for accessories

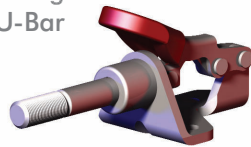
▲ 601



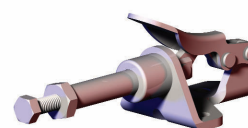
● 601-M



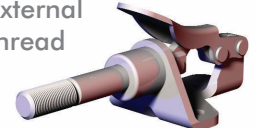
● 601-O
Straight Base
U-Bar



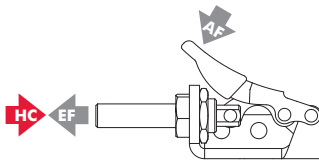
● 601-SS
Stainless steel



● 601-OSS ⓘ
Stainless steel
External
thread



Series 601 Technical Information, Holding Capacities, Standard Clamp Dimensions



Model	Max. Holding Capacity	Weight	EF:AF (pushing/pulling)	Plunger Travel	(M) Plunger Thread	Spindle (Recommended)	Spindle Included
▲ 601					#8-32	105203	Yes
● 601-M	[100 lbf] 440 N	[0.09lb] 0,04kg	14:1/25:1	[0.63] 16	M4	205208-M	No
● 601-O					1/4-20	--	No
● 601-SS					M4	205943	Yes
● 601-OSS ⓘ					1/4-20	--	No

ⓘ This item is available upon request HC = Holding Capacity, EF = Exerting Force, AF = Applied Force
 Preferred Market: ▲ NA/SA ■ Europe ● Global

