

Models 800, 1200

Even the smallest shop can now have rapid power clamping. The DE-STA-CO Low Profile Pneumatic Retractor Clamp operates on ordinary shop line air (properly filtered and lubricated). The clamp arm completely retracts from the work area, for ease in part loading and unloading. The resulting increase in productivity can also reduce your labor costs.

- Compact size and low profile for mounting in restricted areas.
- Uniform clamping force throughout full stroke.
- Variable clamping force allowed by regulating input pressure.
- Requires no auxiliary power source.
- Operates in any position or mounting angle.
- Clamping capacities to 1,600 lbs. (at 150 PSIG).
- Both models available with extended arm, as Models 800-E and 1200-E.



Model 800



Model 800-E

Clamping Arm Configuration

a	b	c
0.50	0.19	0.31

Model no.	Input Pressure [PSI]	Exerting Force Range
800	70-150 PSI	850-1500
800-E	70-150 PSI	650-1200
1200	70-150 PSI	750-1600
1200-E	70-150 PSI	550-1200

Minimum Operating Pressure 70 PSIG

Model no.	EDP no.	Weight	A	B	C	D	E	F	G	H	K	L	M	N	P	Q	Clamping Range R	Mtg. Holes
800	58000	2.50 lbs.	1.63	4.81	2.72	0.25	2.21	0.25	3.13	1.19	0.50	1/4 NPT	2.31	1.50	—	0.59	0.09	0.26
800-E	58001	2.50 lbs.	1.63	4.81	2.72	0.25	2.21	0.25	3.13	1.19	0.50	1/4 NPT	2.31	1.50	0.50	0.59	0.16	0.26
1200	51200	4.00 lbs.	2.25	6.00	3.00	0.28	2.44	0.28	4.25	1.50	1.00	1/4 NPT	3.00	1.38	—	0.63	0.25	0.26
1200-E	51201	4.00 lbs.	2.25	6.00	3.00	0.28	2.44	0.28	4.25	1.50	1.00	1/4 NPT	3.00	1.38	0.69	0.63	0.38	0.26

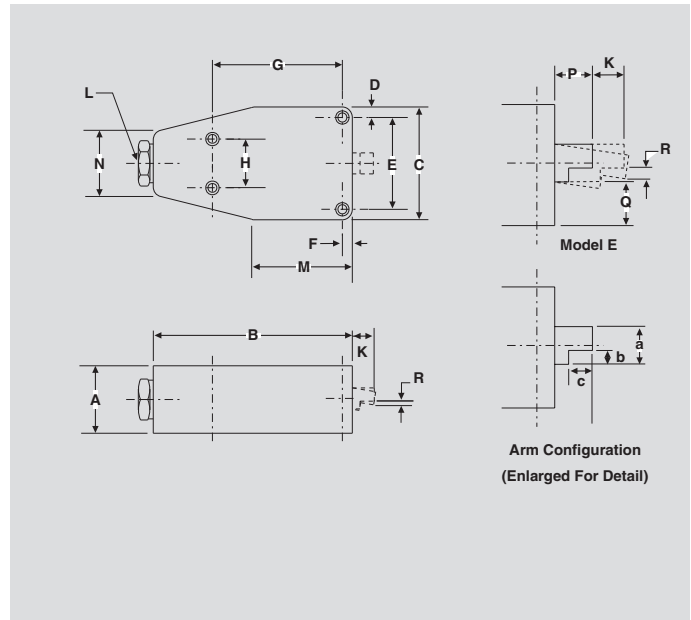
Note: For use with pneumatic power only. 3-way air valve required to power unit (single-acting, spring return).

Here's how it works:

1. Clamp arm retracts fully for loading and unloading ease.
2. Clamp arm moves straight forward
3. Clamp arm pivots down to hold workpiece firmly in position.
4. Use Model 930 or 940 valve and plug one end port on each side to operate as a three way valve.

ALSO AVAILABLE

See accessories beginning on pages 9.1 and 13.1.



Arm Configuration
(Enlarged For Detail)