

# DLB-T, A, N, R, U Series Exploded View



Robohand

DLB-T, A, N, R, U  
SERIES  
MAINTENANCE  
4.30

Item	Qty	Name
------	-----	------

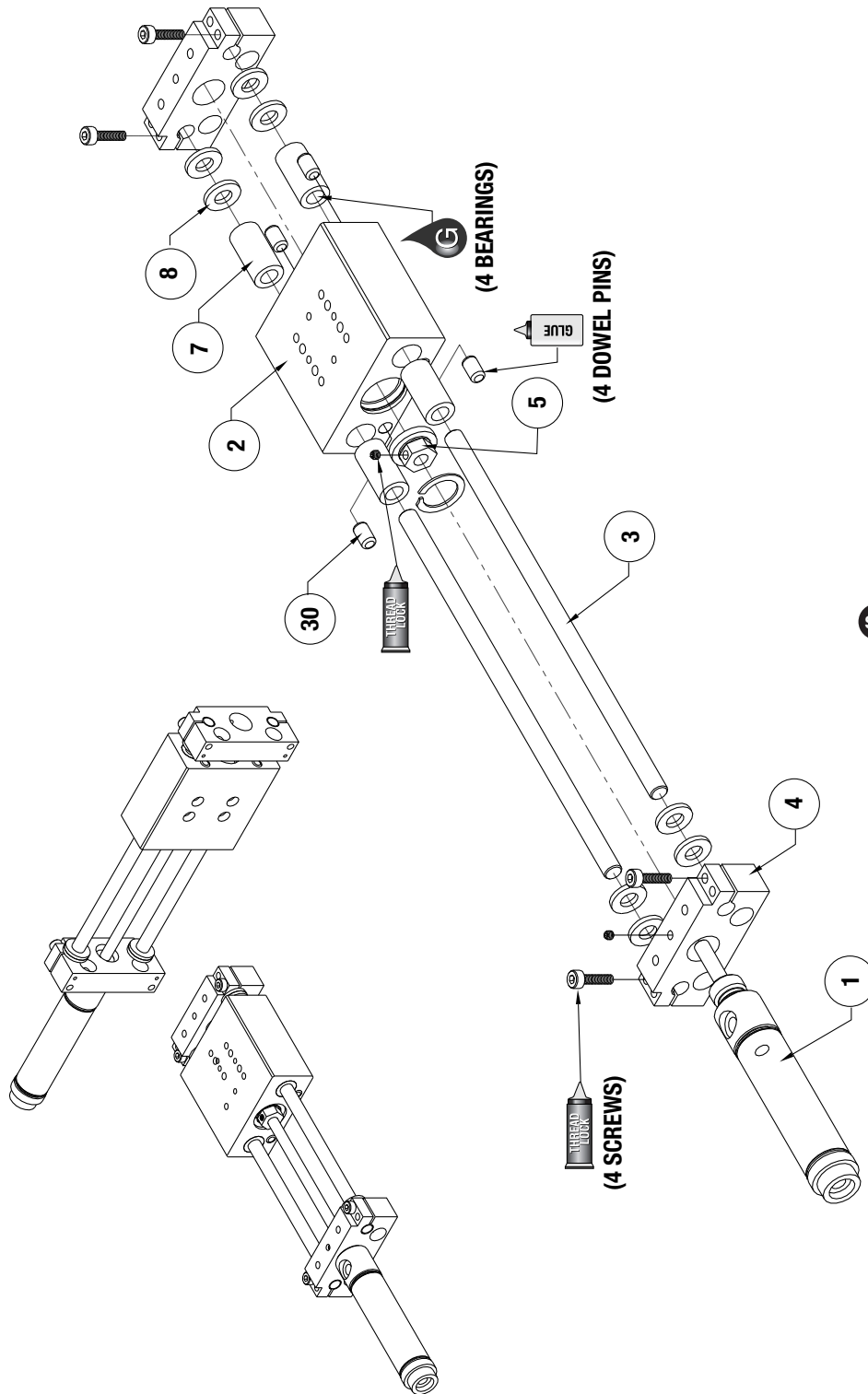
01	1	Cylinder
02	1	Body, Internally Powered
03	2	Guide Shaft
04	2	End Block
05	1	Coupling, Externally Powered
07	4	Bushing
08	8	Shock Pad, Urethane
30	4	Dowel Pin

**NOTE:** Contact the Robohand Sales Department for a complete spare parts list with order numbers and prices.

**Assembly Procedure**

- 1) Press bearings into body, insert shafts, and slide bumpers over each shaft end.
- 2) Install external coupler to body with retainer ring.
- 3) Mount end blocks onto shaft ends and tighten.
- 4) Attach cylinder through end block and external coupler.
- 5) Lock cylinder in place by tightening set screws in the external coupler and end block.

**SK Seal Repair Kit Order #'s  
See Product Data Sheets**



Seal Kit Items



Thread Locker



Krytox™ Lubricant



Lightweight Machine Oil



Teflon® Based Grease



Super Bonder



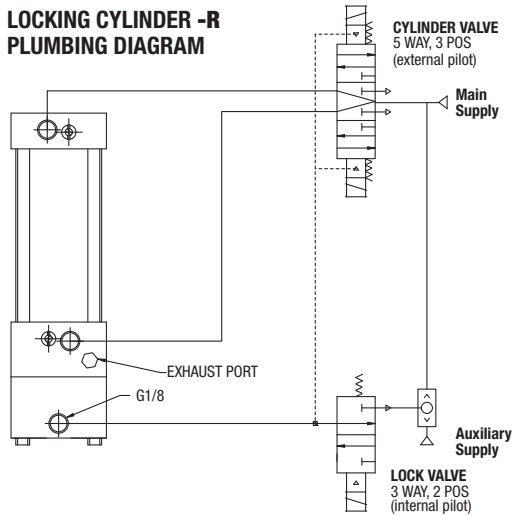
Third Angle Projection



Robohand

# DLB-T, A, N, R, U Series Assembled View

## LOCKING CYLINDER -R PLUMBING DIAGRAM

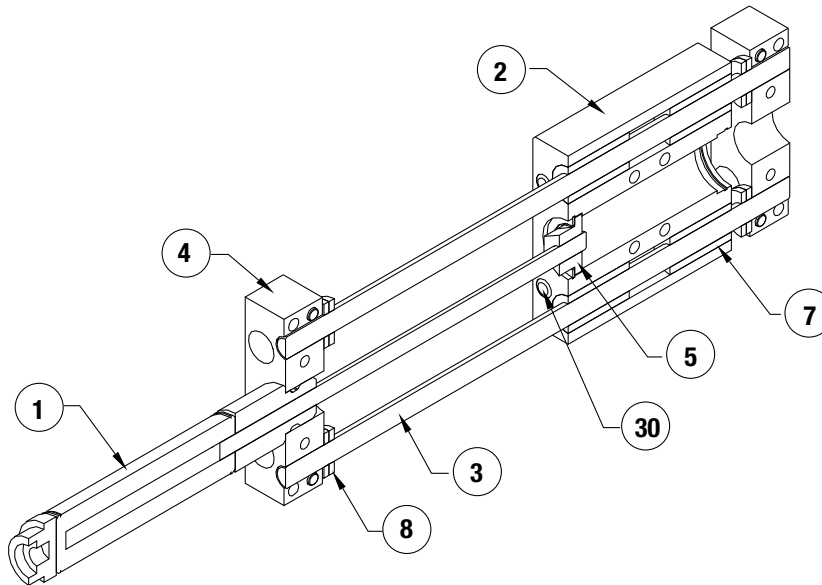


- 1) Lock valve must be maintained energized during cylinder motion, otherwise lock is engaged and cylinder valve shifts to mid position.
- 2) Cylinder valve must be maintained energized during extend or retract. Also, keep energized at end of stroke until change of direction is desired.
- 3) Mid-position of 5/3 cylinder valve may be pressurized outlets if the combination of pressure load on the cylinder and inertia effects of the attached load do not exceed the holding force rating of the locking device, including allowance for wear.
- 4) DO NOT use cylinder lines for any logic functions - pressure levels vary too much.

Item	Qty	Name
01	1	Cylinder
02	1	Body, Internally Powered
03	2	Guide Shaft
04	2	End Block
05	1	Coupling, Externally Powered
07	4	Bushing
08	8	Shock Pad, Urethane
30	4	Dowel Pin

**NOTE:** Contact the Robohand Sales Department for a complete spare parts list with order numbers and prices.

**NOTE:** For accessory mounting, see product data sheets.



DLB-T, A, N, R, U  
SERIES  
MAINTENANCE  
4.31



Seal Kit Items



Thread Locker



Krytox™ Lubricant



Lightweight Machine Oil



Teflon® Based Grease



Super Bonder



Third Angle Projection