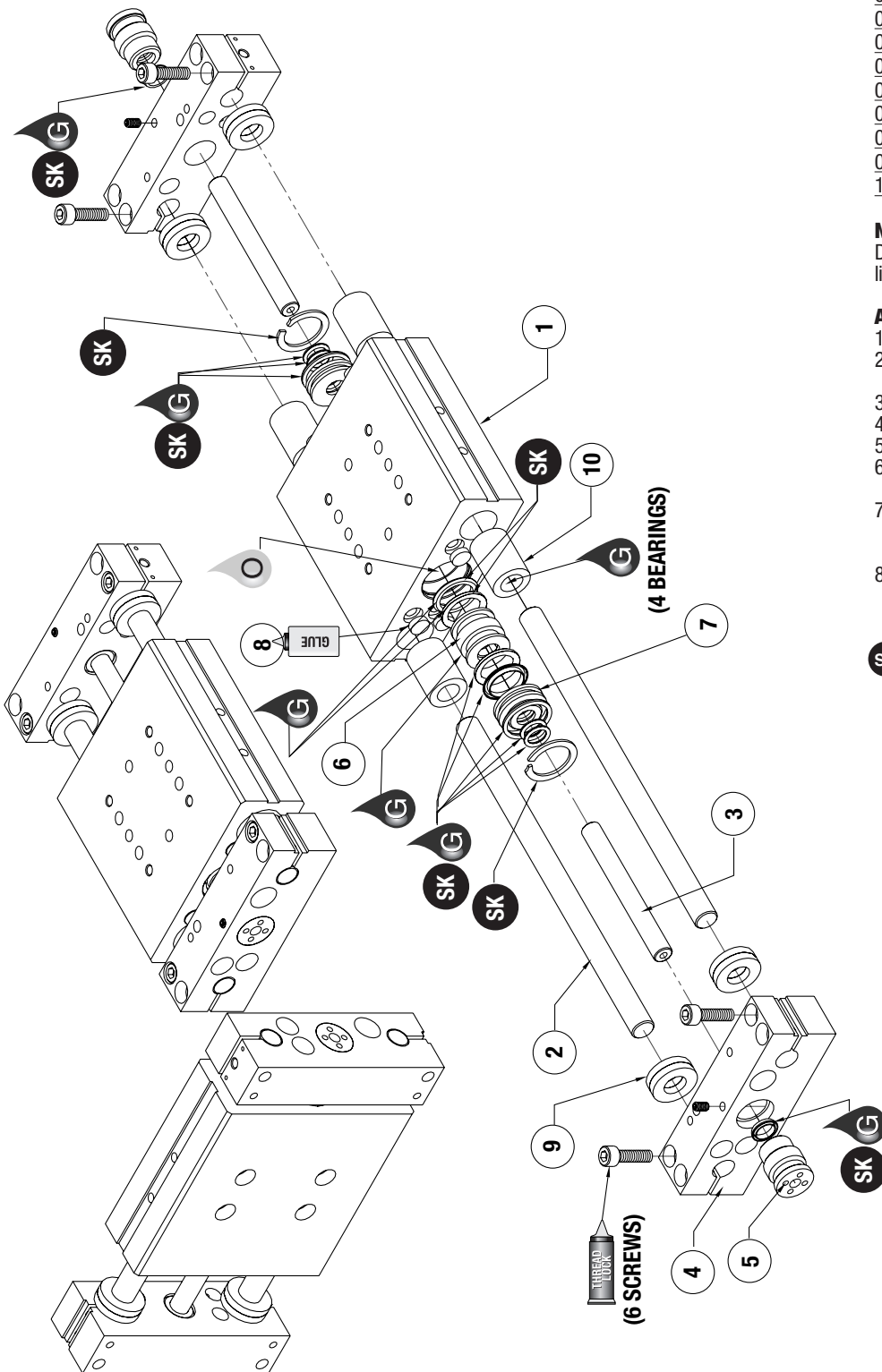


DLB-B & L Series Exploded View



DLB-B & L
SERIES
MAINTENANCE
4.22



Item	Qty	Name
01	1	Body
02	2	Guide Shaft
03	2	Air Tube
04	2	End Block
05	2	Adapter, Internally Powered
06	1	Piston
07	2	Cap, Rod End
08	6	Stop Button
09	8	Shock Pad, Urethane
10	4	Bushing

NOTE: Contact the Robohand Sales Department for a complete spare parts list with order numbers and prices.

Assembly Procedure

- 1) Lubricate and install seals.
- 2) Install piston, air shafts, bearings, caps, and retainer rings into body.
- 3) Install guide shafts into bearings.
- 4) Insert air shafts to piston.
- 5) Slide bumpers onto shaft ends.
- 6) Slide end blocks onto shaft ends and tighten.
- 7) Attach air port adapter to end of each air shaft through center of each end block using spanner wrench.
- 8) Set air port adapters into places with set screw.

**SK Seal Repair Kit Order #'s
See Product Data Sheets**



Seal Kit Items



Thread Locker



Krytox™ Lubricant



Lightweight Machine Oil



Teflon® Based Grease



Super Bonder



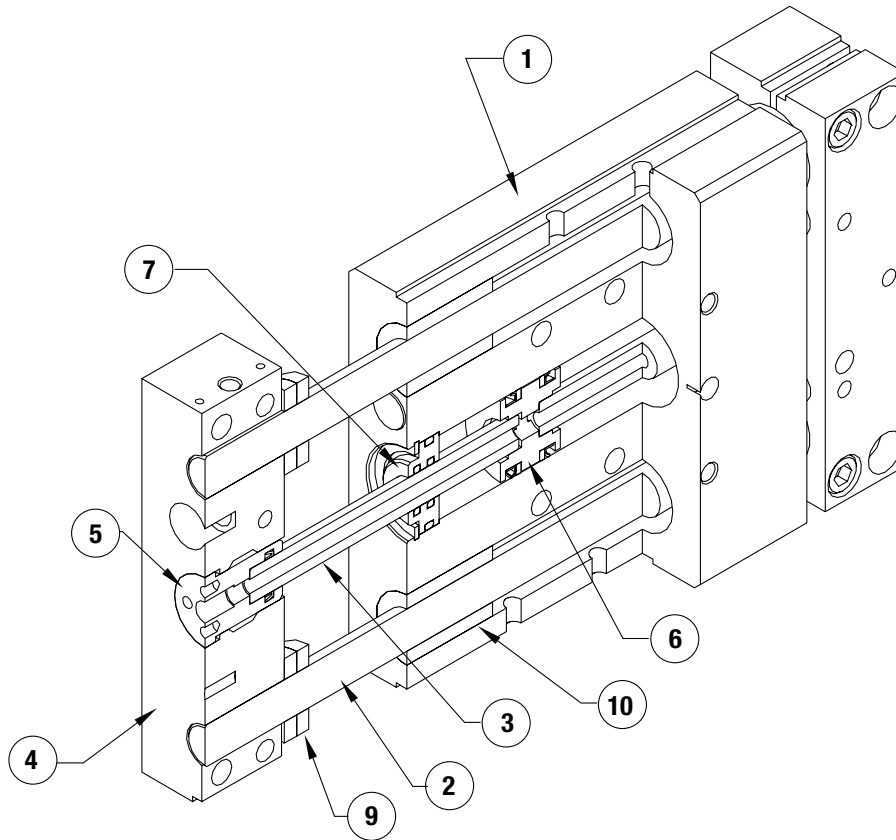
Third Angle Projection

Item	Qty	Name
------	-----	------

01	1	Body
02	2	Guide Shaft
03	2	Air Tube
04	2	End Block
05	2	Adapter, Internally Powered
06	1	Piston
07	2	Cap, Rod End
08	6	Stop Button
09	8	Shock Pad, Urethane
10	4	Bushing

NOTE: Contact the Robohand Sales Department for a complete spare parts list with order numbers and prices.

NOTE: For accessory mounting information see Product Data Sheets.



Seal Kit
Items



Thread
Locker



Krytox™
Lubricant



Lightweight
Machine Oil



Teflon® Based
Grease



Super
Bonder



Third Angle
Projection