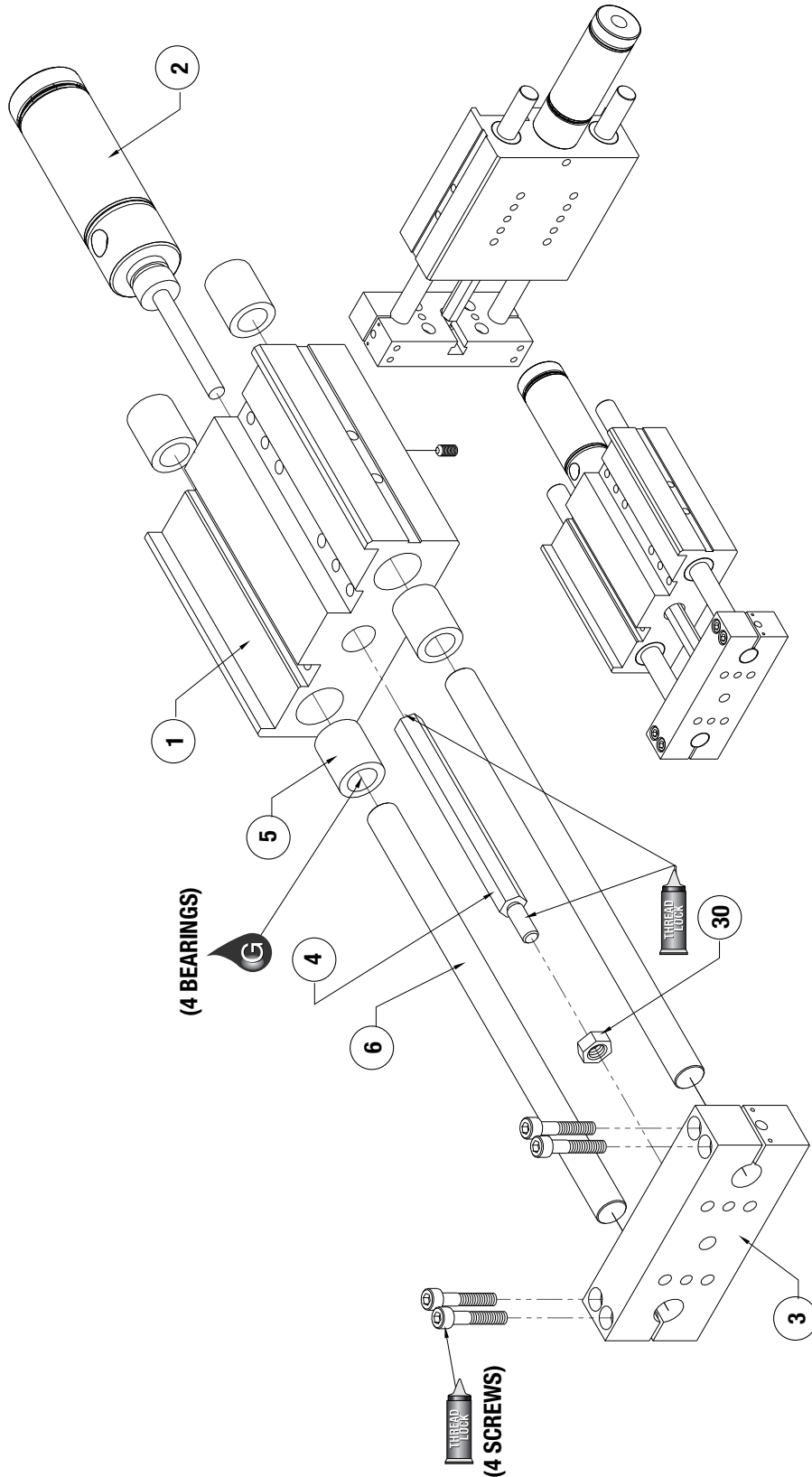


DLT-T, A, N, R, U Series Exploded View



Robohand



Item	Qty	Name
01	1	Body, Externally Powered
02	1	Cylinder
03	1	Tooling Plate
04	1	Shaft, Extender
05	4	Bushing
06	2	Guide Shaft
30	1	Nut, Stover

NOTE: Contact the Robohand Sales Department for a complete spare parts list with order numbers and prices.

Assembly Procedure

- 1) Install bearings and shafts into body.
- 2) Attach shaft extender to cylinder rod and install through body.
- 3) Fasten tool plate to shaft ends.
- 4) Install shaft extender to tool plate.

SK Seal Repair Kit Order #'s
See Product Data Sheets



Seal Kit Items



Thread Locker



Krytox™ Lubricant



Lightweight Machine Oil



Teflon® Based Grease



Super Bonder



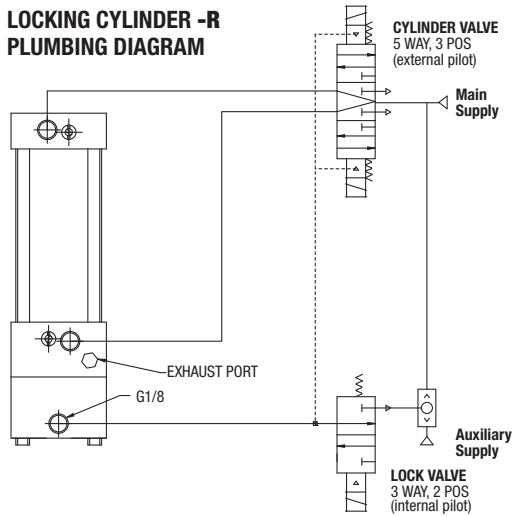
Third Angle Projection



Robohand

DLT-T, A, N, R, U Series Assembled View

LOCKING CYLINDER -R PLUMBING DIAGRAM



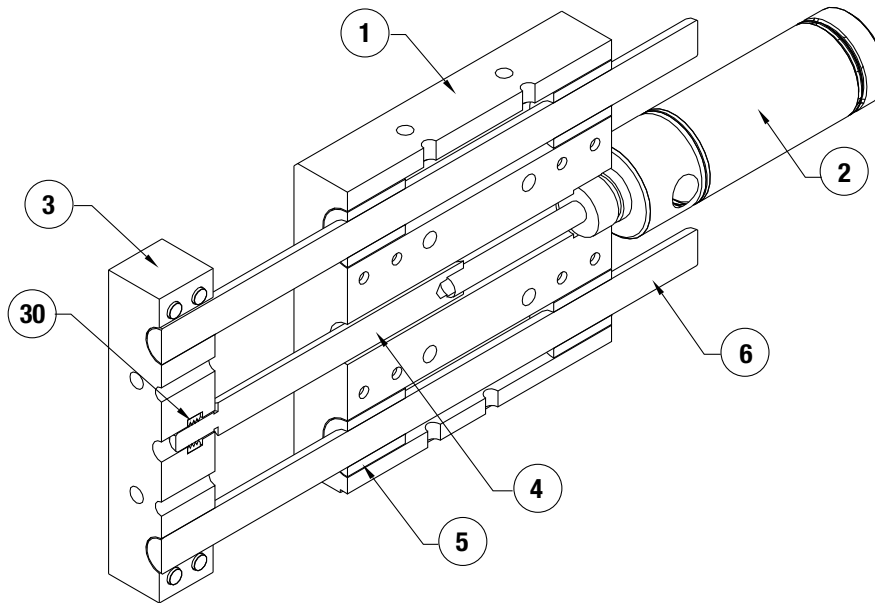
- 1) Lock valve must be maintained energized during cylinder motion, otherwise lock is engaged and cylinder valve shifts to mid position.
- 2) Cylinder valve must be maintained energized during extend or retract. Also, keep energized at end of stroke until change of direction is desired.
- 3) Mid-position of 5/3 cylinder valve may be pressurized outlets if the combination of pressure load on the cylinder and inertia effects of the attached load do not exceed the holding force rating of the locking device, including allowance for wear.
- 4) DO NOT use cylinder lines for any logic functions - pressure levels vary too much.

Item Qty Name

Item	Qty	Name
01	1	Body, Externally Powered
02	1	Cylinder
03	1	Tooling Plate
04	1	Shaft, Extender
05	4	Bushing
06	2	Guide Shaft
30	1	Nut, Stover

NOTE: Contact the Robohand Sales Department for a complete spare parts list with order numbers and prices.

NOTE: For accessory mounting, see product data sheets



DLT-T, A, N, R, U
SERIES
MAINTENANCE

4.69



Seal Kit Items



Thread Locker



Krytox™ Lubricant



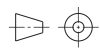
Lightweight Machine Oil



Teflon® Based Grease



Super Bonder



Third Angle Projection