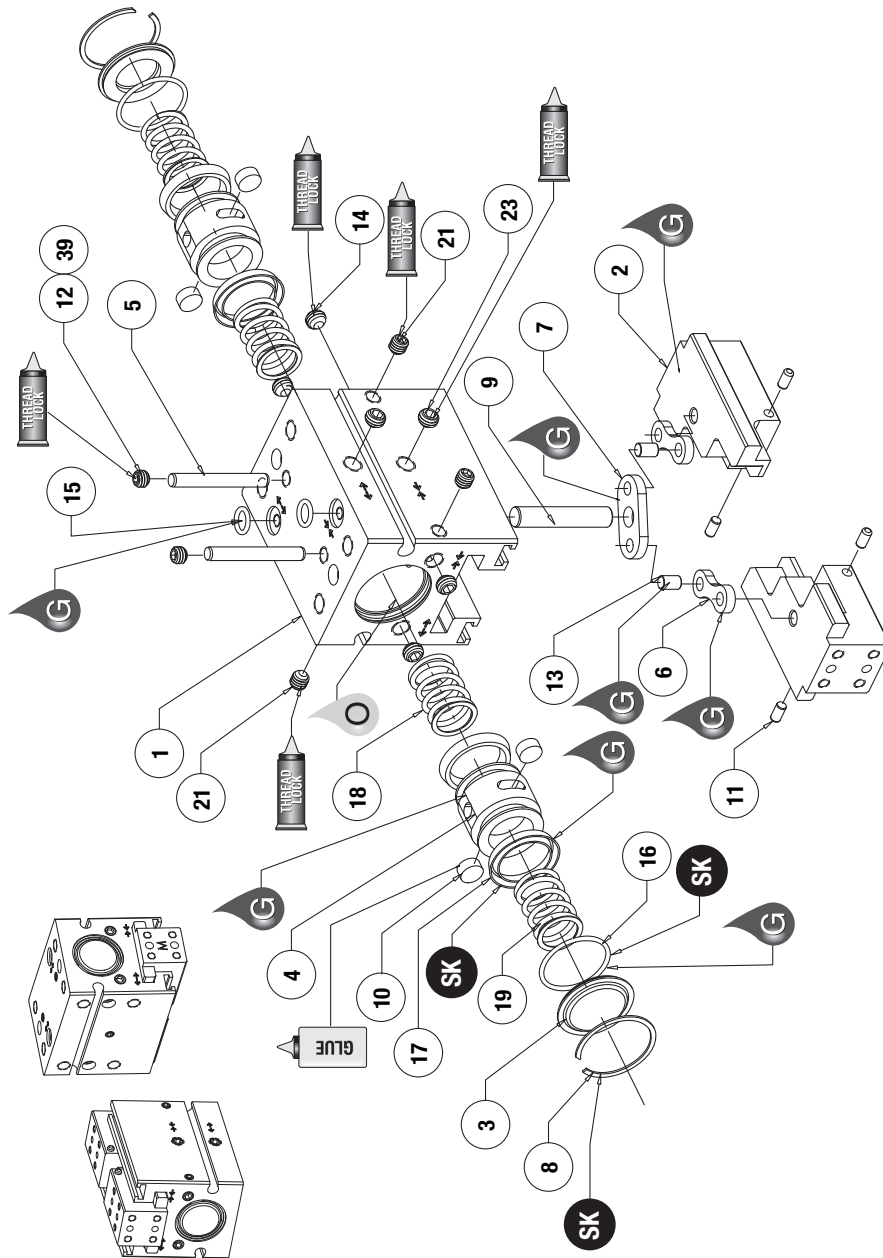


# DPG SERIES EXPLODED VIEW



Robohand



| Item | Qty | Name  |
|------|-----|---|
| 01   | 1   | Body  |
| 02   | 2   | Jaw   |
| 03   | 2   | Cap   |
| 04   | 2   | Piston  |
| 05   | 2   | Drive Pin                                       |
| 06   | 2   | Synchronizing Bar                               |
| 07   | 1   | Equalizer                                       |
| 08   | 2   | Retaining Ring                                  |
| 09   | 1   | Pivot Pin                                       |
| 10   | 4   | Magnet  |
| 11   | 4   | Targets for Inductive Sensors                   |
| 12   | 2   | Set Screw - Drive Pin Access Plug               |
| 13   | 2   | Equalizer/Synchronizing Bar pivot pin           |
| 14   | 4   | Set Screw - End Port Plugs                      |
| 15   | 2   | O-ring - Top Porting Manifold Seals (-T option) |
| 16   | 2   | O-ring - Cap Seals                              |
| 17   | 4   | U-cup - Piston Seals                            |
| 18   | 2   | Springs for "-O" Spring-Open Option             |
| 19   | 2   | Springs for "-C" Spring-Closed Option           |
| 21   | 3   | Set Screw - Internal Porting Plugs              |
| 23   | 2   | Set Screw - Side Porting Plugs (-T option)      |
| 39   | 1   | Set Screw - Plug (-LF and -RF options only)     |

**NOTE:** Contact the Robohand Sales Department for a complete spare parts list with order numbers and prices.

**SK Seal Repair Kit Order #'s See Product Data Sheets**

### Assembly Procedure

- 1) Lubricate body.
- 2) Plug cross ports in body.
- 3) Press pivot pin into body.
- 4) Insert magnets into pistons making sure magnets attract to each other.
- 5) Lubricate and install seals onto pistons.
- 6) Insert pistons into body aligning drive pin hole in pistons with the drive pin hole in the body.
- 7) Press pins into equalizer.
- 8) Assemble equalizer with synchronizing bars and place onto pivot pin in body

making sure holes in synchronizing bars line up with holes in pistons.

- 9) From top body mounting surface insert drive pins through the pistons and into the synchronizing bars making sure not to go through the synchronizing bars.
- 10) Place jaws into body aligning the drive pins with the hole in the jaws.
- 11) Press drive pins into jaws.
- 12) Install drive pin plugs into body.
- 13) Place seals onto caps and install with retaining rings.

### Non-Synchronous Procedure

- 1) Remove drive pin plugs.
- 2) Press drive pins out of body from jaw side.
- 3) Remove jaws from body.
- 4) Remove equalizer and synchronizing bars from body.
- 5) Re-install jaws into body aligning the drive pin with the hole in the jaws
- 6) Press drive pins into jaws.
- 7) Re-install drive pin plugs into body.



Seal Kit Items



Thread Locker



Krytox™ Lubricant



Lightweight Machine Oil



Teflon™ Based Grease



Super Bonder



Third Angle Projection

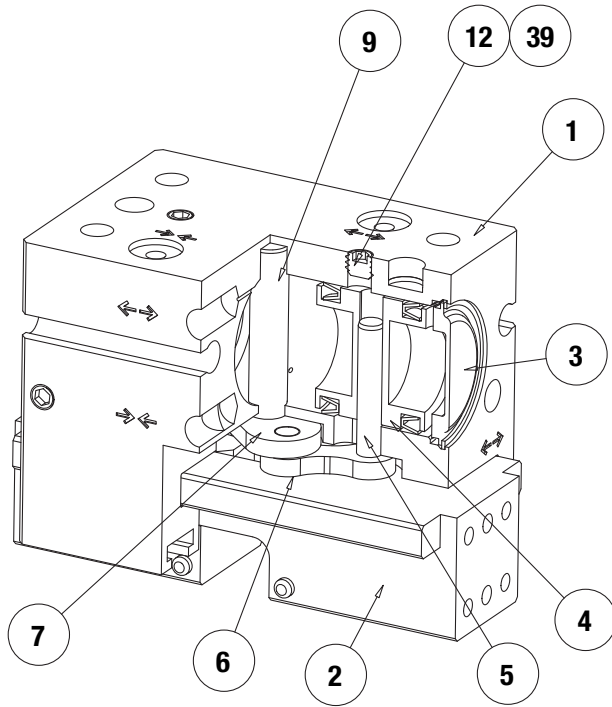


Robohand

# DPG SERIES ASSEMBLED VIEW

DPG SERIES  
MAINTENANCE

1.95



| Item | Qty | Name   |
|------|-----|--|
| 01   | 1   | Body   |
| 02   | 2   | Jaw  |
| 03   | 2   | Cap  |
| 04   | 2   | Piston   |
| 05   | 2   | Drive Pin                                      |
| 06   | 2   | Synchronizing Bar                              |
| 07   | 1   | Equalizer                                      |
| 09   | 1   | Pivot Pin                                      |
| 12   | 2   | Set Screw - Drive Pin<br>Access Plug           |
| 39   | 1   | Set Screw - Plug (-LF and<br>-RF options only) |

**NOTE:** Contact the Robohand Sales Department for a complete spare parts list with order numbers and prices.

## Accessory Installation & Adjustment Instructions

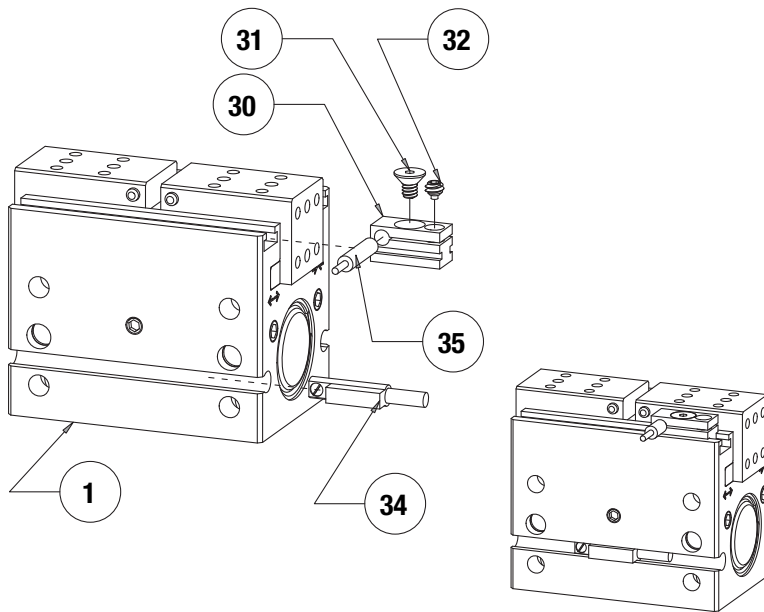
### Installation:

#### Magneto Resistive Sensors

- 1) Install sensors in profile slots of gripper body as shown.
- 2) Set sensors with integrated screw.

#### Inductive Sensors

- 1) Insert sensor bracket into slot of body.
- 2) Insert sensor into bracket and adjust sensor depth so that sensor light indicates on target.
- 3) Tighten sensor locking screw (#31) to hold sensor depth.
- 4) Position sensor bracket for desired stroke detection.
- 5) Tighten sensor bracket with setscrew (#32) to lock stroke detection position.



Seal Kit  
Items



Thread  
Locker



Krytox™  
Lubricant



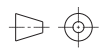
Lightweight  
Machine Oil



Teflon™ Based  
Grease



Super  
Bonder



Third Angle  
Projection