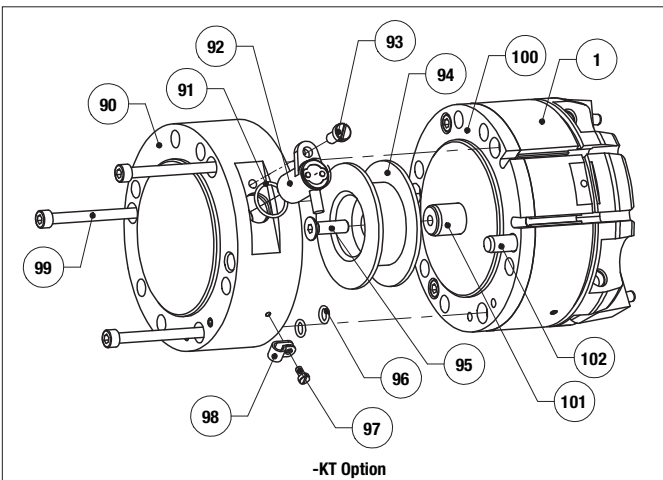


Item	Qty	Name
01	1	Body
02	1	Piston
03	1	Cam Driver
04	1	Cap
06	2	Jaw
08	1	Shielded case
09	2	Pivot Pin
52	2	SS Screw, Cap
53	4	SHC Screw, Cap
56	1	Magnet
57	2	SS Screw, Body
61	1	SHC Screw, Piston
62	1	Nut, Piston
63	4	Pin, Jaw
64	2	Screw, Shielded case
65	1	Springs
90	1	KT Body
91	1	KT Body, O-Ring
92	1	KT Sensor
93	1	KT Body, Screw
94	1	Target
95	1	Target, Screw
96	2	KT Body, O-Ring
97	1	KT Body, Screw
98	1	Wire Holder
99	3	KT Body, Screw
100	1	Cap for KT Shaft
101	1	Shaft
102	1	KT Body, Pin

**NOTE:** Contact the Robohand Sales Department for a complete spare parts list with order numbers and prices.

### Assembly Procedure

- Lubricate and install the seals onto the cap (x3), the piston (x2) and the body (x1).
- If top airports are used, remove the plug screws from the cap (#4) and insert into side airports of the body (#1).
- Assemble the piston (#2) and the cam driver (#3) with the washer and the screw.
  - RE option : Place the counterbore holes of the piston on the cam driver side.
  - RI option : Place the counterbore holes of the piston on the screw side.
- Insert the piston into the body. Orientate the piston so that the magnets are placed in front of the body slots.
  - RE option : insert the springs (#65) between the body and the piston in the counterbore holes.
- Place and screw the cap onto the body. The dowel holes of the cap and of the body have to be aligned.
  - RI option : insert the springs (#65) between the cap and the piston in the counterbore holes.
- Lubricate the slots and the jaws (#6) and the groove of the cam driver.
- Place the jaws into the body slot and insert the pivot pin aligning with the jaw hole. The flat of the pivot pin has put in front of the rear side of the body. Screw SS screw into the body to prevent the pivot pin from moving.
- Attach the shielded case.



**SK Seal Repair Kit Order #'s**  
See Product Data Sheets



Seal Kit Items



Thread Locker



Krytox™ Lubricant



Lightweight Machine Oil



Teflon® Based Grease



Super Bonder

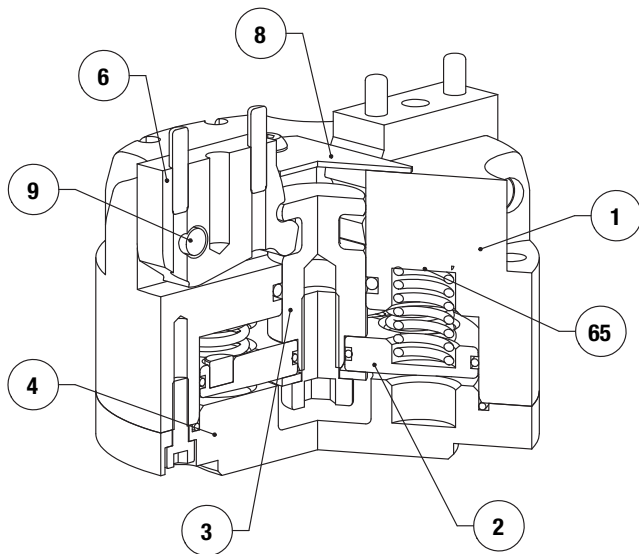


Third Angle Projection



Robohand

# RUA/DUA Series Assembled View

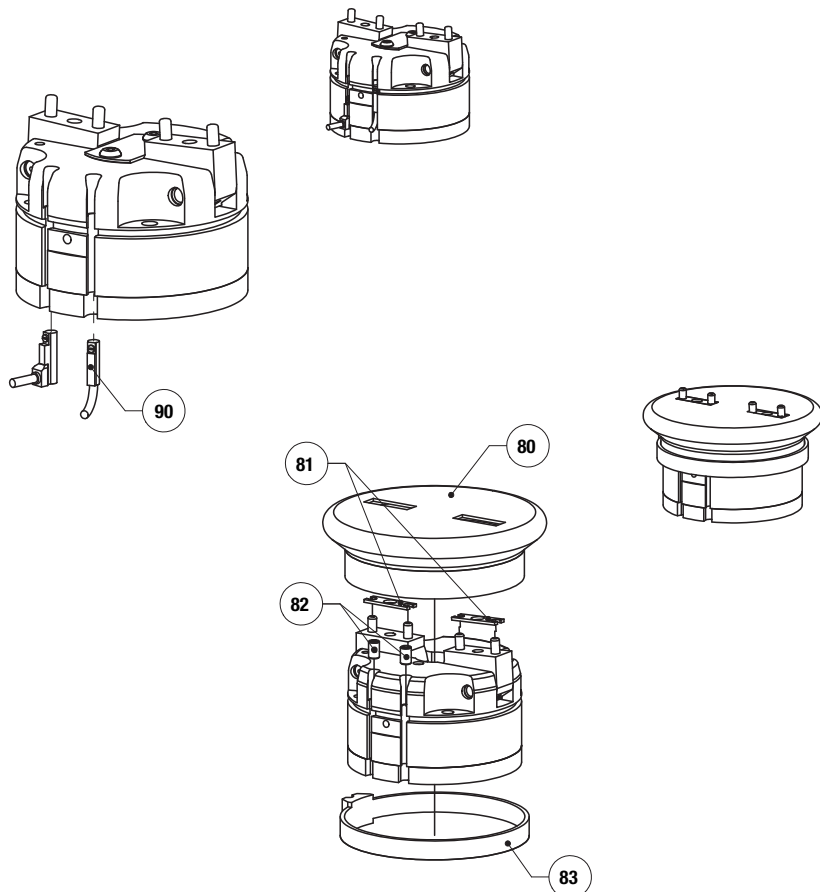


Item	Qty	Name
01	1	Body
02	1	Piston
03	1	Cam Driver
04	1	Cap
06	2	Jaw
08	1	Shielded case
09	2	Pivot Pin
52	2	SS Screw, Cap
53	4	SHC Screw, Cap
56	1	Magnet
57	2	SS Screw, Body
61	1	SHC Screw, Piston
62	1	Nut, Piston
63	4	Pin, Jaw
64	2	Screw, Shielded case
65	1	Spring

**NOTE:** Contact the Robohand Sales Department for a complete spare parts list with order numbers and prices.

RUA/DUA SERIES  
MAINTENANCE  
2.17

## Accessory Installation & Adjustment Instructions



### Installation - MR Sensors

- 1) Insert sensors (#90) for either end of the profile slots
- 2) Set the sensors with the integrated screw

### Installation - Boot

- 1) Mount the gripper onto the customer mounting plate
- 2) Insert the spacer (#81) into the pins of the jaws
- 3) Insert sensor slot plugs (#82) into sensor mounting groove. Install the boot (#80) on the gripper. The jaw opening of the boot has to fit with the spacer. Insert lip of boot seal into the groove of the gripper
- 4) Use the clamping ring (#83) to fasten the boot on the gripper
- 5) Attach fingers to the jaws (ensure that boot is sealed between the jaws and the finger)



Seal Kit Items



Thread Locker



Krytox™ Lubricant



Lightweight Machine Oil



Teflon® Based Grease



Super Bonder



Third Angle Projection