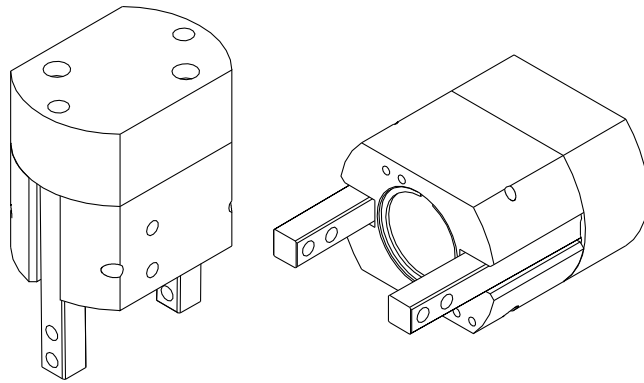


RA-15 & 25 Series Exploded View



Robohand

RA-15 & 25
SERIES
MAINTENANCE
2.34



Item	Qty	Name
------	-----	------

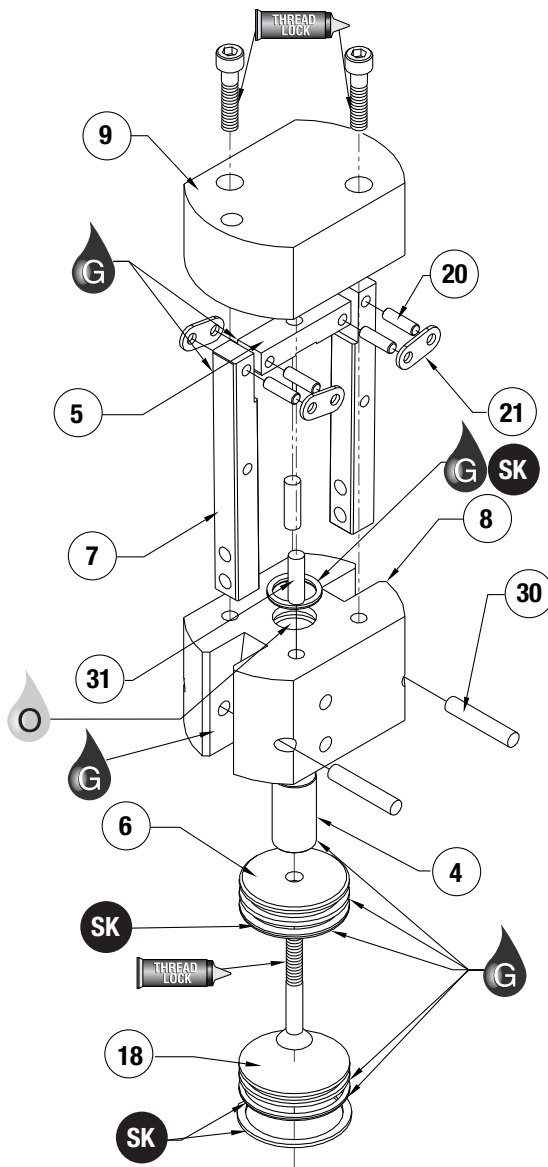
04	1	Shaft
05	1	Cross Bar
06	1	Piston
07	2	Jaw
08	1	Body
09	1	Cap
18	1	Plug
20	4	Pin
21	4	Link
30	2	Dowel Pin
31	2	Dowel Pin

NOTE: Contact the Robohand Sales Department for a complete spare parts list with order numbers and prices.

Assembly Procedure

- 1) Lubricate and install seals.
- 2) Install piston and shaft into body.
- 3) Install jaws.
- 4) Press dowel pins through fingers from air port side.
- 5) Install links and cross bar.
- 6) Install cap on body.
- 7) Install plug and retaining ring.

SK Seal Repair Kit Order #'s
See Product Data Sheets



Seal Kit Items



Thread Locker



Krytox™ Lubricant



Lightweight Machine Oil



Teflon® Based Grease



Super Bonder



Third Angle Projection

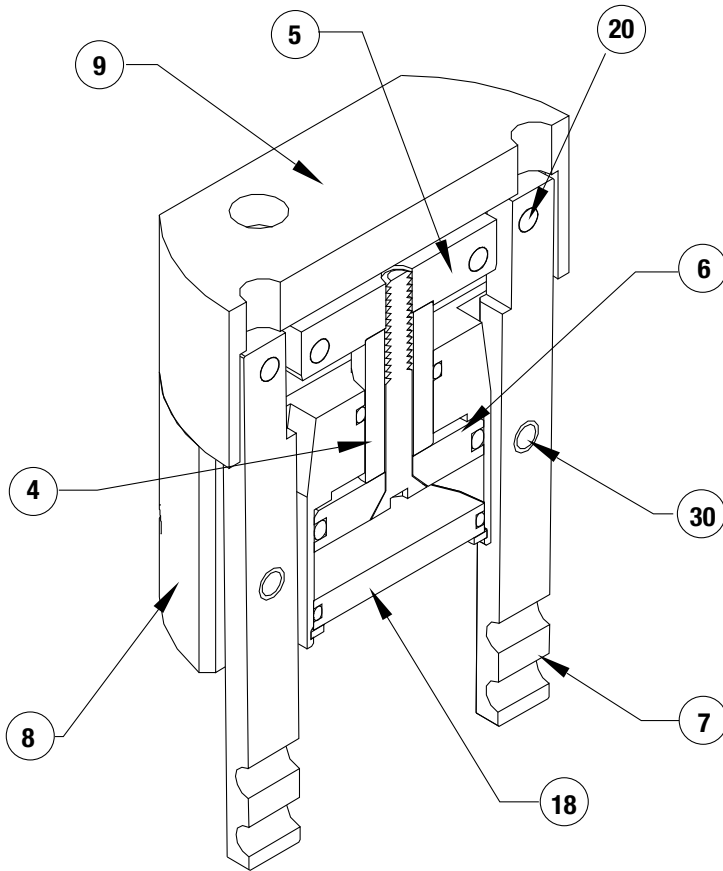


Robohand

RA-15 & 25 Series Assembled View

Item Qty Name

04	1	Shaft
05	1	Cross Bar
06	1	Piston
07	2	Jaw
08	1	Body
09	1	Cap
18	1	Plug
20	4	Pin
21	4	Link
30	2	Dowel Pin
31	2	Dowel Pin



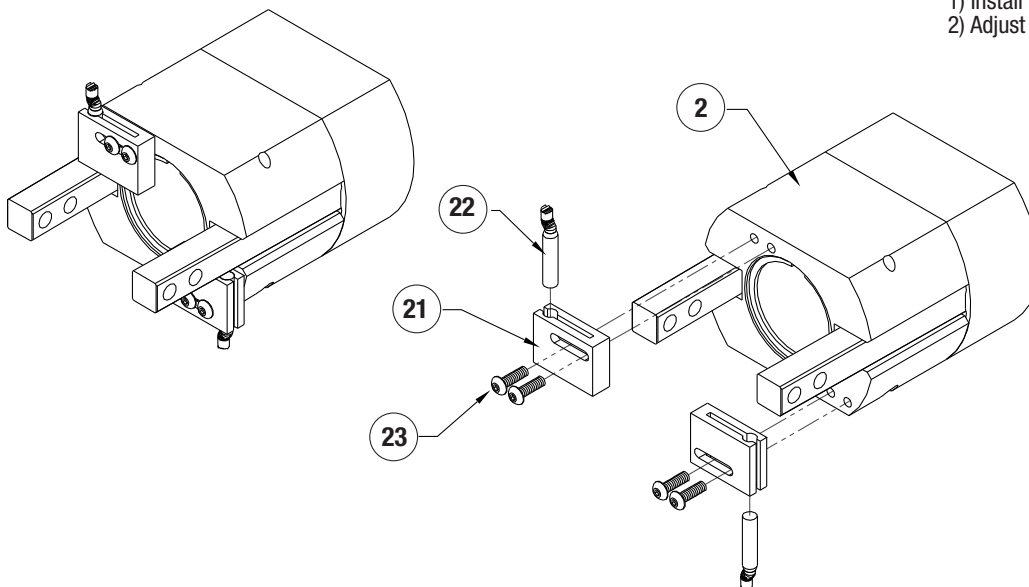
NOTE: Contact the Robohand Sales Department for a complete spare parts list with order numbers and prices.

RA-15 & 25
SERIES
MAINTENANCE

2.35

Accessory Installation & Adjustment Instructions

- 1) Install sensors as shown.
- 2) Adjust for open/closed stroke sensors.



Seal Kit
Items



Thread
Locker



Krytox™
Lubricant



Lightweight
Machine Oil



Teflon® Based
Grease



Super
Bonder



Third Angle
Projection