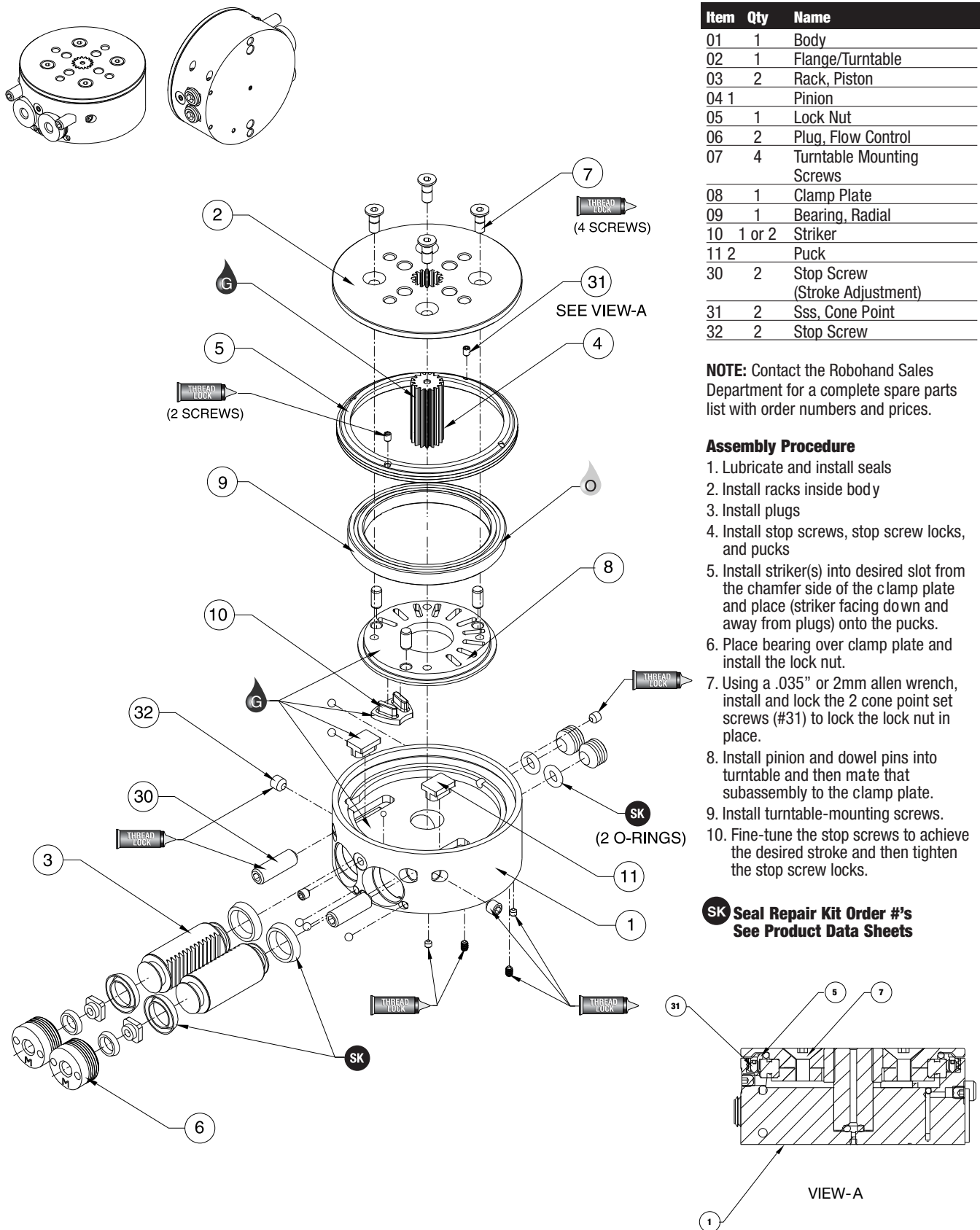




Robohand

RR-18, -28 Series Exploded View

RR-18 & 28
SERIES
MAINTENANCE
3.30



Item	Qty	Name
01	1	Body
02	1	Flange/Turntable
03	2	Rack, Piston
04	1	Pinion
05	1	Lock Nut
06	2	Plug, Flow Control
07	4	Turntable Mounting Screws
08	1	Clamp Plate
09	1	Bearing, Radial
10	1 or 2	Striker
11	2	Puck
30	2	Stop Screw (Stroke Adjustment)
31	2	Sss, Cone Point
32	2	Stop Screw

NOTE: Contact the Robohand Sales Department for a complete spare parts list with order numbers and prices.

Assembly Procedure

1. Lubricate and install seals
2. Install racks inside body
3. Install plugs
4. Install stop screws, stop screw locks, and pucks
5. Install striker(s) into desired slot from the chamfer side of the clamp plate and place (striker facing down and away from plugs) onto the pucks.
6. Place bearing over clamp plate and install the lock nut.
7. Using a .035" or 2mm allen wrench, install and lock the 2 cone point set screws (#31) to lock the lock nut in place.
8. Install pinion and dowel pins into turntable and then mate that subassembly to the clamp plate.
9. Install turntable-mounting screws.
10. Fine-tune the stop screws to achieve the desired stroke and then tighten the stop screw locks.

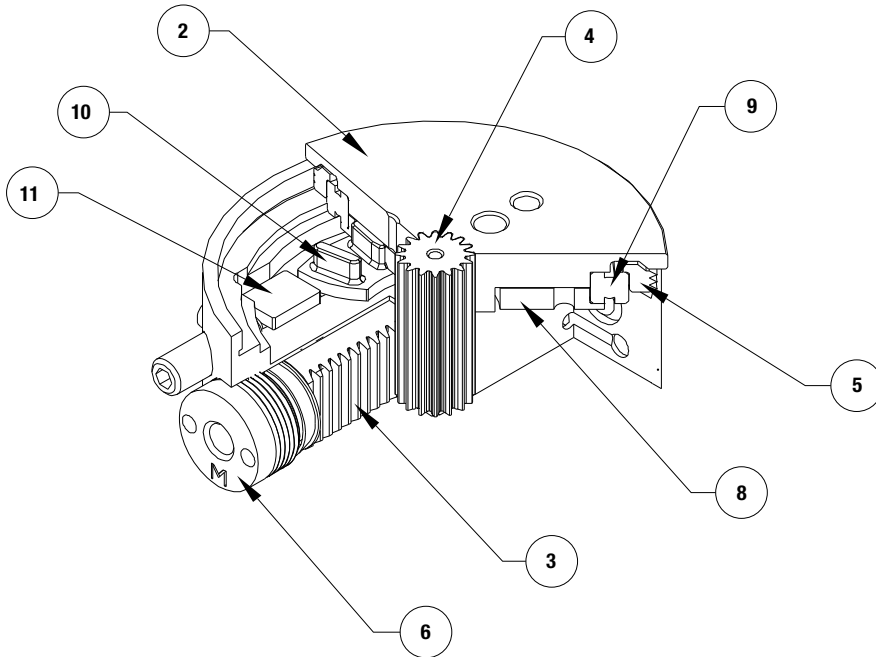
**SK Seal Repair Kit Order #'s
See Product Data Sheets**

SK Seal Kit Items	Thread Locker	KRYTOX™ Lubricant	Lightweight Machine Oil	Teflon® Based Grease	Super Bonder	Third Angle Projection



Robohand

RR-18, -28 Series Assembled View



Item	Qty	Name
02	1	Flange/Turntable
03	2	Rack, Piston
04	1	Pinion
05	1	Lock Nut
06	2	Plug, Flow Control
08	1	Clamp Plate
09	1	Bearing, Radial
10	1 or 2	Striker
11	2	Puck
15	1 or 2	Sensor
21	1 or 2	Push-in Fitting
22	1 or 2	Barb Fitting
25	1	Sensor Coupler

NOTE: Contact the Robohand Sales Department for a complete spare parts list with order numbers and prices.

RR-18 & 28
SERIES
MAINTENANCE
3.31

Accessory Installation & Adjustment Instructions

Installation

For each sensor.

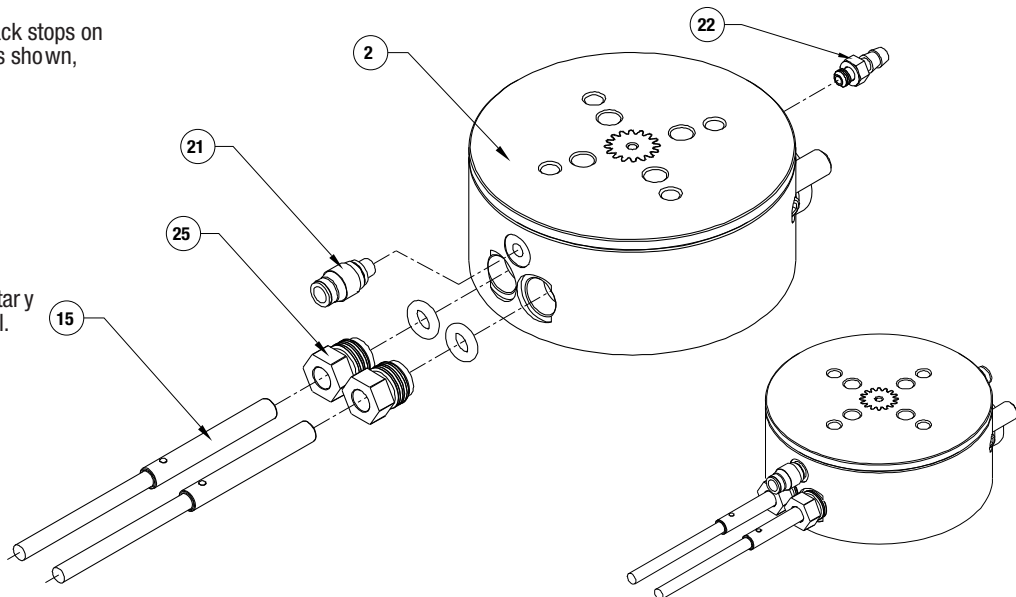
1. Rotate flange so piston rack stops on end stop. Install sensor as shown, pushing in until it stops.
2. Tighten nut.

Plumbing fittings:

Either the barb fitting or the push-in fitting can be used for any M3 port.

Flow controls (not shown) can be used for the main rotary airports as additional control.

Note: Sensors need to be readjusted when end stops are adjusted.



Seal Kit Items



Thread Locker



Krytox™ Lubricant



Lightweight Machine Oil



Teflon® Based Grease



Super Bonder



Third Angle Projection