

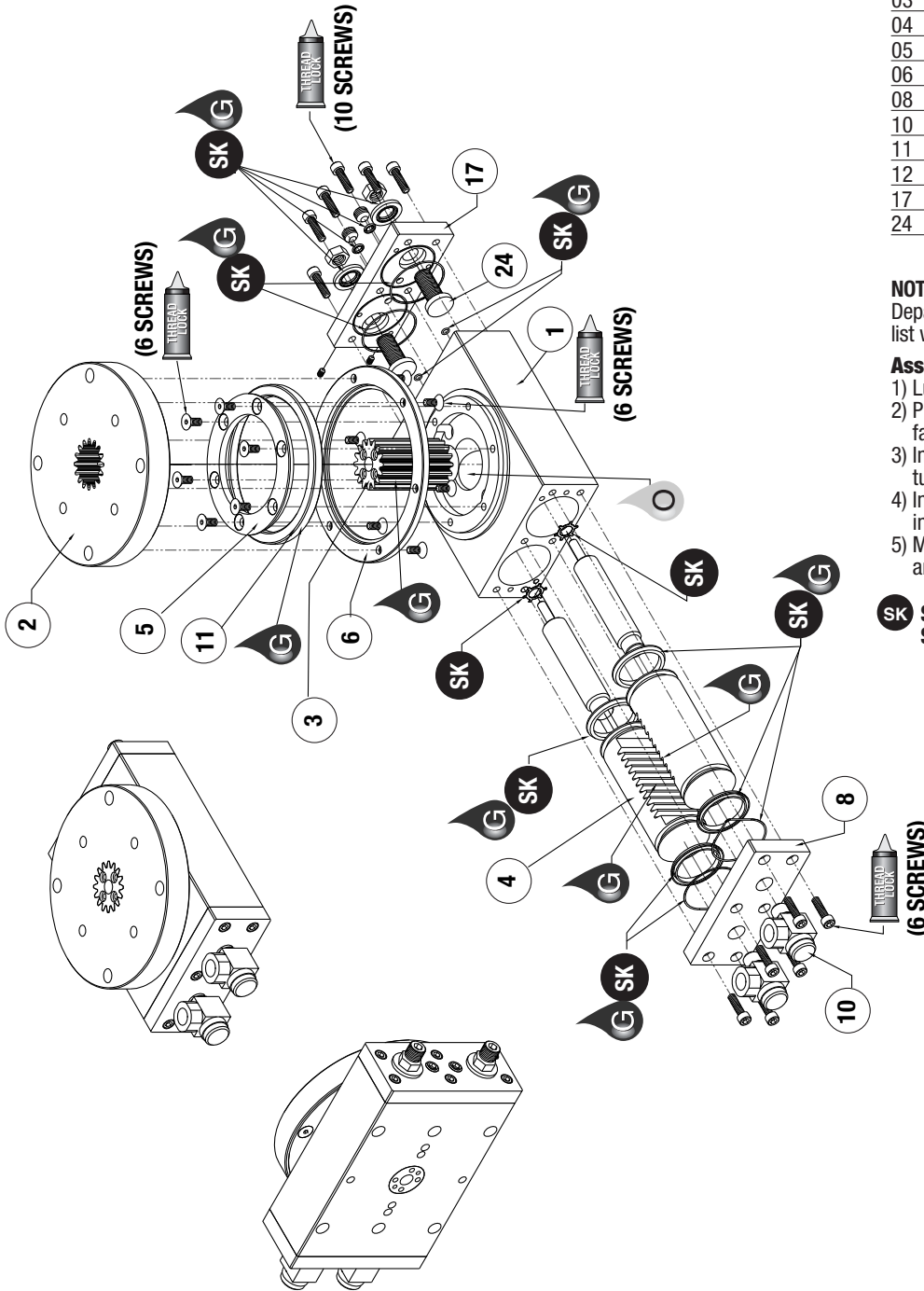
RR-36 & 46 Series Exploded View



Robohand

RR-36 & 46
SERIES
MAINTENANCE
3.38

Item	Qty	Name
01	1	Body, Main
02	1	Turntable
03	1	Pinion
04	2	Rack, Piston
05	1	Inner Bearing Ring
06	1	Ring, Outer Bearing
08	1	Plate, Ported End
10	2	Flow Control
11	1	Bearing
12	1	Shock Absorber
17	1	Plate, End
24	2	Stop Adjustment Screws



NOTE: Contact the Robohand Sales Department for a complete spare parts list with order numbers and prices.

Assembly Procedure

- 1) Lubricate and install seals.
- 2) Place outer ring and bearing on body, fasten inner ring to body.
- 3) Install outer bearing ring on turntable/pinion subassembly.
- 4) Install shocks in racks and install inside body.
- 5) Mount end plates, adjustable stops, and flow controls to body.

SK Seal Repair Kit Order #'s See Product Data Sheets

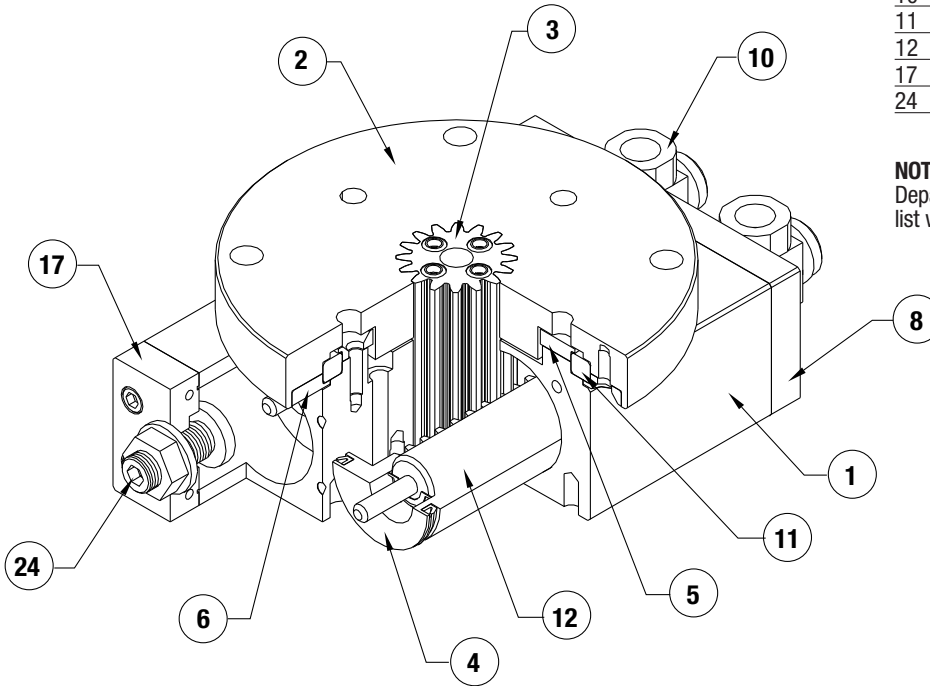
SK Seal Kit Items	THREAD LOCKER Thread Locker	KRYTOX Krytox™ Lubricant	O Lightweight Machine Oil	G Teflon® Based Grease	GLUE Super Bonder	Third Angle Projection
----------------------	--------------------------------	-----------------------------	------------------------------	---------------------------	----------------------	------------------------



Robohand

RR-36 & 46 Series Assembled View

Item	Qty	Name
01	1	Body, Main
02	1	Turntable
03	1	Pinion
04	2	Rack, Piston
05	1	Inner Bearing Ring
06	1	Ring, Outer Bearing
08	1	Plate, Ported End
10	2	Flow Control
11	1	Bearing
12	1	Shock Absorber
17	1	Plate, End
24	2	Stop Adjustment Screws



NOTE: Contact the Robohand Sales Department for a complete spare parts list with order numbers and prices.

RR-36 & 46
SERIES
MAINTENANCE
3.39

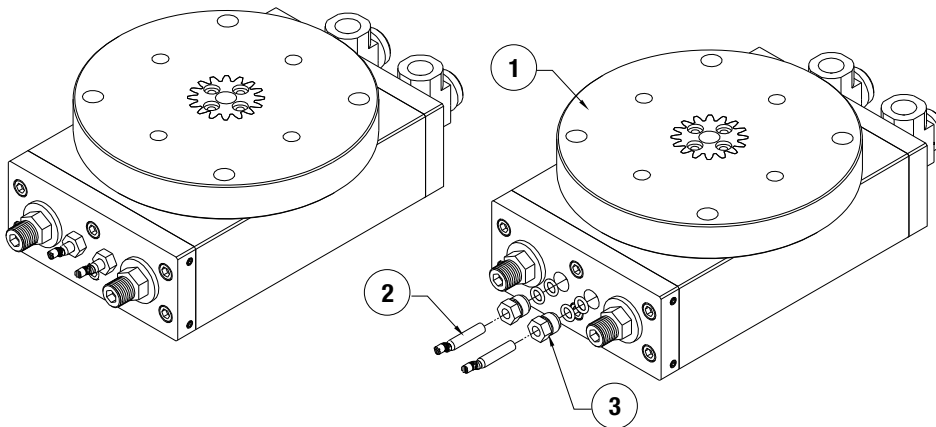
Accessory Installation & Adjustment Instructions

Installation

For Each Sensor:

- 1) Rotate flange so piston rack stops on end stop install sensor as shown, pushing sensor in until it stops.
- 2) Tighten nut.

Note: Sensors need to be readjusted when end stops are adjusted.



Seal Kit
Items



Thread
Locker



Krytox™
Lubricant



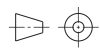
Lightweight
Machine Oil



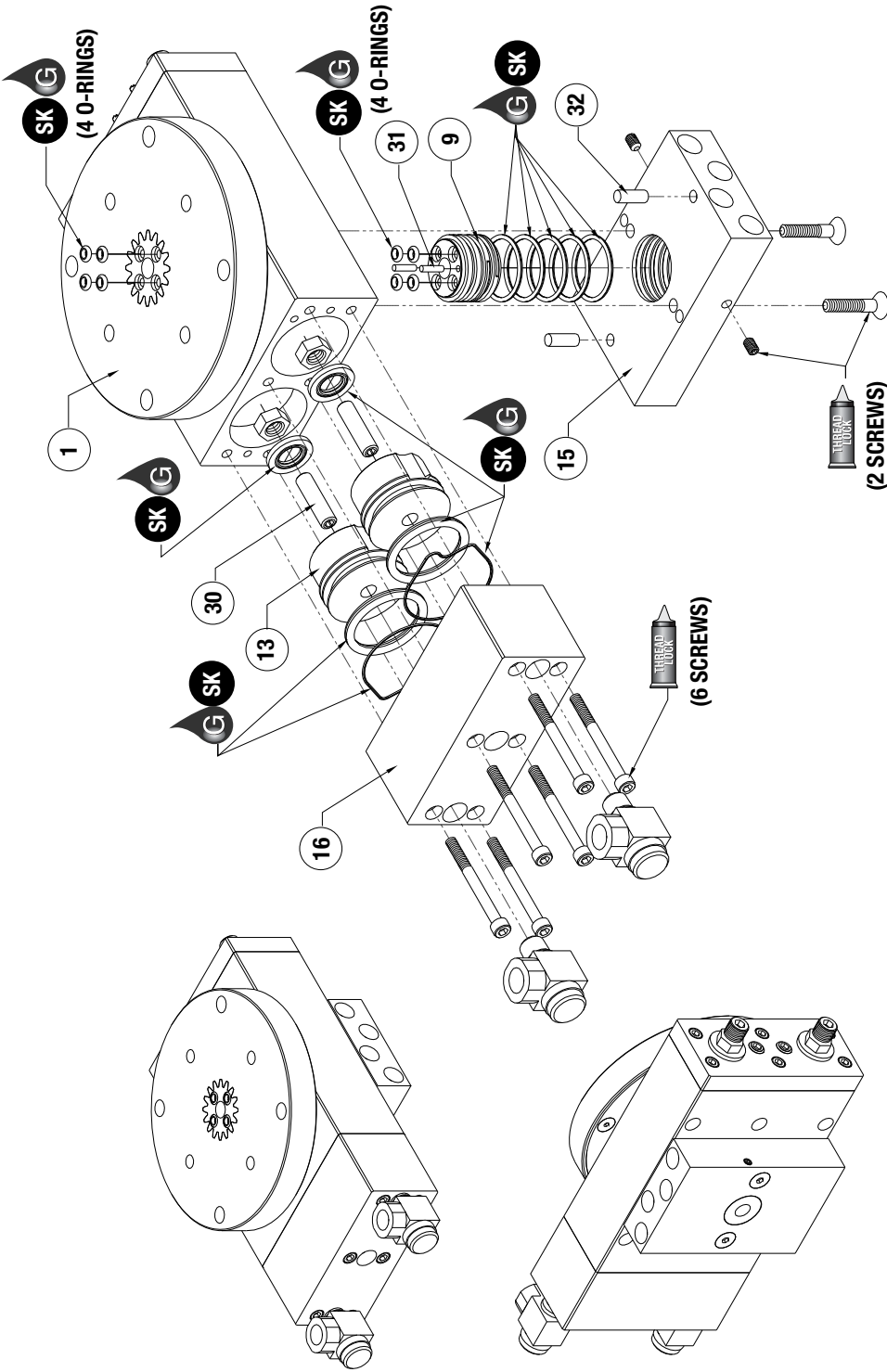
Teflon® Based
Grease



Super
Bonder



Third Angle
Projection



Item Qty Name

**RR-36&46-S
(Mid Position Stop Option)**

13	2	Piston, Midstop
16	1	Body, Midstop
30	2	Mid-Stop Adjustment Screws

**RR-36&46-M
(Rotary Manifold Option)**

09	1	Manifold, Rotary
15	1	Manifold
31	2	Dowel Pin
32	2	Dowel Pin

NOTE: Contact the Robohand Sales Department for a complete spare parts list with order numbers and prices.

**Manifold Option
Assembly Procedure**

- 1) Lubricate and install 8 small o-rings. (4 in the pinion, 4 in the rotary manifold body).
- 2) Install 5 large O-rings on the rotary manifold.
- 3) Press dowel pin into rotary manifold
- 4) Install rotary manifold in manifold body.
- 5) Attach manifold assembly to rotary actuator body.

**Mid-Stop Option
Assembly Procedure**

- 1) Lubricate and install o-rings.
- 2) Install mid-stop pistons, adjustment screws, seal washers, and hex nuts in rotary actuator body.
- 3) Attach mid-stop body to rotary actuator body.
- 4) Install flow controls.

Mid-Stop Adjustment Procedure

- 1) Remove mid-stop body from actuator base.
- 2) Remove the two mid-stop pistons from the mid-stop body and insert them into their respective cylinder bores in the actuator base.
- 3) Back off both mid-stop adjustment screws (#30) while pushing the mid-stop pistons firmly into the cylinder bores. The face of the pistons should seat against the actuator base. If not, then continue to back out the stop screws.
- 4) Turn the turntable to the desired position and advance the mid-stop adjustment screws until both screws touch the main piston faces
- 5) Re-attach the two mid-stop pistons to the mid-stop body and fasten mid-stop body back onto actuator base.

**SK Seal Repair Kit Order #'s
See Product Data Sheets**

Seal Kit Items	Thread Locker	Krytox™ Lubricant	Lightweight Machine Oil	Teflon® Based Grease	Super Bonder	Third Angle Projection
----------------	---------------	-------------------	-------------------------	----------------------	--------------	------------------------



Robohand

RR-36 & 46 Options Series Assembled View

Item Qty Name

RR-36&46-S (Mid Position Stop Option)		
13	2	Piston, Midstop
16	1	Body, Midstop
30	2	Mid-Stop Adjustment Screws

RR-36&46-M (Rotary Manifold Option)		
09	1	Manifold, Rotary
15	1	Manifold
31	2	Dowel Pin
32	2	Dowel Pin

NOTE: Contact the Robohand Sales Department for a complete spare parts list with order numbers and prices.

RR-36 & 46
OPTIONS
MAINTENANCE

3.41

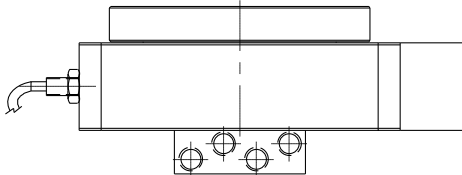
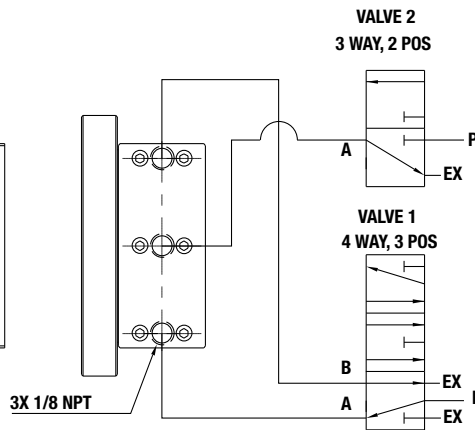
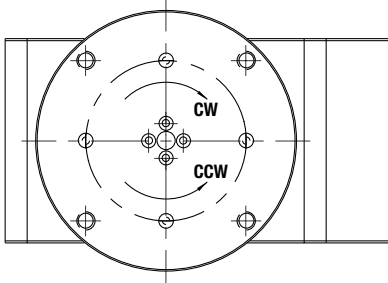
Valve 1:

- Actuate Port A to Rotate CW.
- Actuate Port B to Rotate CCW.
- Neutral (Center) position when actuating Valve 2 for mid-position stop.

Valve 2:

Port A Open to Exhaust for Normal Operation.
Actuate Port A for Mid-Position Stop.
Valve1 Must be in Neutral (Center) Position

RR-36, -46 MID-STOP OPERATION.



Seal Kit Items



Thread Locker



Krytox™ Lubricant



Lightweight Machine Oil



Teflon® Based Grease



Super Bonder



Third Angle Projection