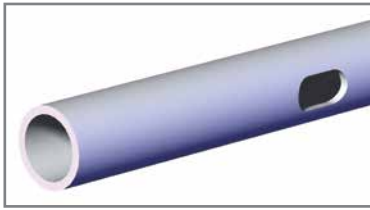


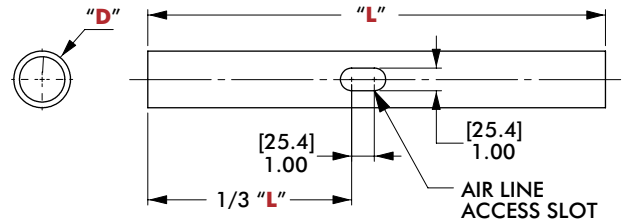
# TUBES AND RODS

Round Tooling | Dimensions | Technical Specifications

## BT1 Slotted Aluminum Boom/Tubing

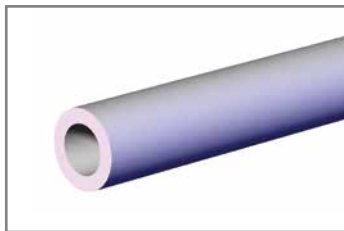


**"L"** = Specify Length  
in 6.00" or 150mm Increments  
**English Example:**  
CPI-BT1-150-7S-06 (6.00")  
**Metric Example:**  
CPI-BT1-150-7S-150 (150mm)

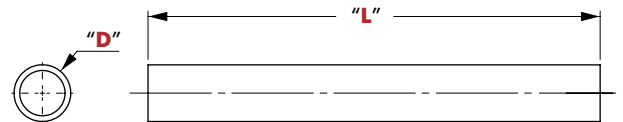


Model	(Ø) "D"	Wall Thickness	Weight	Linear Deflection	Torsional Twist
CPI-BT1-150-7S-"L"	1.50"(in)	[0.25"] 6.35mm	[1.2 lb/ft] 1.8 kg/m	5.6mm [0.22"] @ 100lb/24.00"	.3.1° @ 300ft-lbs
CPI-BT1-250-9S-"L"	2.50"(in)	[0.25"] 6.35mm	[2.1 lb/ft] 3.1 kg/m	12.7mm [0.50"] @ 150lb/48.00"	2.3° @ 600ft-lbs
CPI-BT1-2538-9S-"L"	2.50"(in)	[0.375"] 9.53mm	[2.9 lb/ft] 4.3 kg/m	10.2mm [0.40"] @ 150lb/48.00"	1.8° @ 600ft-lbs
CPI-BT1-60-9S-"L" (Metric)	60mm	[0.20"] 5mm	[1.6 lb/ft] 2.4 kg/m	17.8mm [0.70"] @ 150lb/48.00"	3.3° @ 600ft-lbs

## PAT Aluminum Tubing



**"L"** = Specify Length  
in 6.00" or 150mm Increments  
**English Example:**  
CPI-PAT-15-06 (6.00")  
**Metric Example:**  
CPI-PAT-40-150 (150mm)

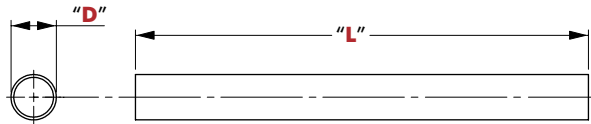


Model	(Ø) "D"	Wall Thickness	Weight	Linear Deflection	Torsional Twist
CPI-PAT-1025-"L"	1.00"(in)	[0.25"] 6.35mm	[0.7 lb/ft] 1.02 kg/m	1.5mm [0.06"] @ 50lb/12.00"	2.4° @ 100ft-lbs
CPI-PAT-12-"L"	1.25"(in)	[0.25"] 6.35mm	[0.9 lb/ft] 1.37kg/m	3.3mm [0.13"] @ 75lb/18.00"	1.6° @ 100ft-lbs
CPI-PAT-15-"L"	1.50"(in)	[0.25"] 6.35mm	[1.2 lb/ft] 1.8 kg/m	5.6mm [0.22"] @ 100lb/24.00"	.3.1° @ 300ft-lbs
CPI-PAT-40-"L" (Metric)	40mm	[0.20"] 5mm	[1.2 lb/ft] 1.8 kg/m	5.6mm [0.22"] @ 100lb/24.00"	3.2° @ 300ft-lbs
CPI-PAT-25-"L"	2.50"(in)	[0.25"] 6.35mm	[2.1 lb/ft] 3.1 kg/m	12.7mm [0.50"] @ 150lb/48.00"	2.3° @ 600ft-lbs
CPI-PAT-60-"L" (Metric)	60mm	[0.20"] 5mm	[1.6 lb/ft] 2.4 kg/m	17.8mm [0.70"] @ 150lb/48.00"	3.3° @ 600ft-lbs
CPI-PAT-2538-"L"	2.50"(in)	[0.375"] 9.53mm	[2.9 lb/ft] 4.3 kg/m	10.2mm [0.40"] @ 150lb/48.00"	1.8° @ 600ft-lbs

# TUBING, RODS AND BUSHINGS

Round Tooling | Dimensions | Technical Specifications

## PAT Thin Wall Aluminum Tubing



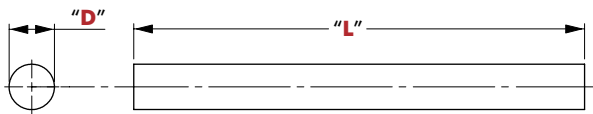
Model	(Ø) "O.D."	Wall Thickness	Weight
CPI-PAT-50T-"L"	0.50"(in)	[0.085"] 2.16mm	[0.13 lb/ft] 193.0 g/m
CPI-PAT-75T-"L"	0.75"(in)	[0.085"] 2.16mm	[0.20 lb/ft] 309.3 g/m
CPI-PAT-10T-"L"	1.00"(in)	[0.085"] 2.16mm	[0.28 lb/ft] 425.6 g/m

"L" = Specify Length

Standard Lengths

- 04 (4.00")
- 06 (6.00")
- 08 (8.00")
- 10 (10.00")
- 12 (12.00")
- 24 (24.00")
- 36 (36.00")

## PAB Aluminum Rods



"L" = Specify Length

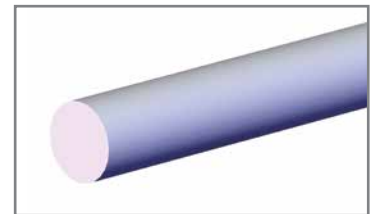
in 6.00" or 150mm Increments

English Example:

CPI-PAB-10-06 (6.00")

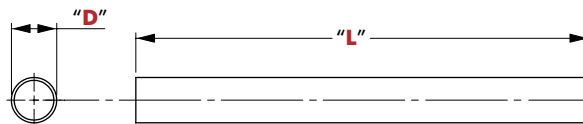
Metric Example:

CPI-PAB-25-150 (150mm)



Model	(Ø) "D"	Wall Thickness	Weight	Linear Deflection	Torsional Twist
CPI-PAB-10-"L"	1.00"(in)	SOLID BAR	[0.9 lb/ft] 1.4 kg/m	1.52mm [0.06"] @ 50lb/12.00"	.002° @ 100ft-lb
CPI-PAB-25-"L" (Metric)	25.0mm	SOLID BAR	[0.9 lb/ft] 1.4 kg/m	1.52mm [0.06"] @ 50lb/12.00"	.002° @ 100ft-lb

## PST Steel Tubing



(L) = Specify Length

PST-10: 150, 200, 225, 250, 275, 300 [mm] (CPI-PST-10-150)

PST-1212: 6, 8, 10, 12, 14, 16, 18 [in] (CPI-PST-1212-6)

M1512: 125, 160, 300, 350, 350, 600, 900 [mm] (M1512-150)

Model	(Ø) "D"	Wall Thickness	Weight	Linear Deflection	Torsional Twist
CPI-PST-10-"L"	1.00"(in)	3.18mm [0.125"]	1.8 kg/m [1.2 lb/ft]	0.9mm [0.003"] @ 50lb/12.00"	.001° @ 100ft-lb
CPI-PST-1212-"L"	1.25"(in)	3.18mm [0.125"]	2.2 kg/m [1.5 lb/ft]	0.3mm [0.001"] @ 50lb/12.00"	.001° @ 100ft-lb

Model	(Ø) "O.D."	Wall Thickness	Weight
M1512-"L"	1.00"(in)	3.0mm [0.12"]	1.5 kg/m [1.03 lb/ft]