

# 6000-SW SERIES

## Manual Swing Clamps | Product Overview and Dimensions

### Features:

- Left or right swing motion available
- 90° Swing clamp arm motion
- Higher clamping force than pneumatic version
- Though-hole mounting
- Clamp arm can be radially positioned 360°
- Handle can be radially positioned up to 180°

### Applications:

- Assembly
- Checking fixtures
- Welding fixtures
- Tensioning devices

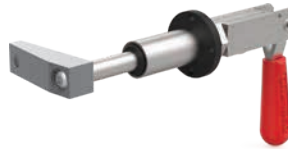
**6002-SWL**  
Clamp Arm  
Swing Left



**6002-SWR**  
Clamp Arm  
Swing Right



**6004-SWL**  
Clamp Arm  
Swing Left



**6004-SWR**  
Clamp Arm  
Swing Right



Shown in open (un-clamp) position.

## Technical Information | Holding Capacities | Dimensions

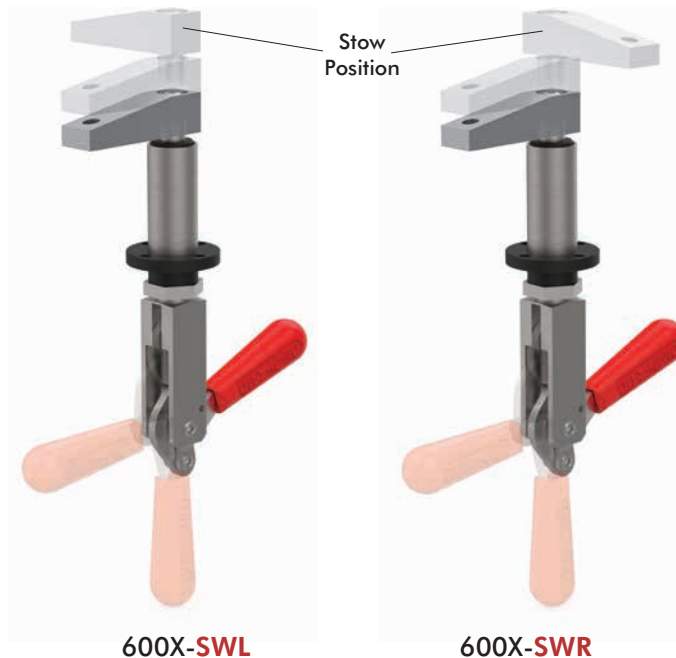
### Color Handles

Available on models in this series. Add -Y, -G, -B, -K to end of model number.



Model	Swing Direction	Max. Holding Capacity*	Total Stroke [in] mm	Stroke During Rotation [in] mm	Stroke Straight Pull [in] mm	Weight [lb] Kg
6002-SWL	LH	[400 lbf] 1780 N	[0.75] 19.1	[0.53] 13.5	[0.22] 5.6	[0.95] 0.43
6002-SWR	RH					
6004-SWL	LH	[600 lbf] 2670 N	[1.50] 38	[0.87] 22	[0.63] 16	[1.32] 0,6
6004-SWR	RH					

\*Straight pull. Does not account for clamp arm.



# 6000-SW SERIES

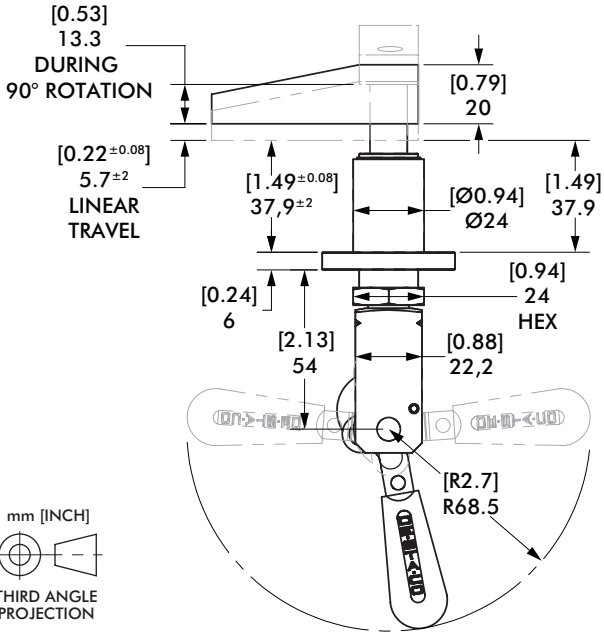
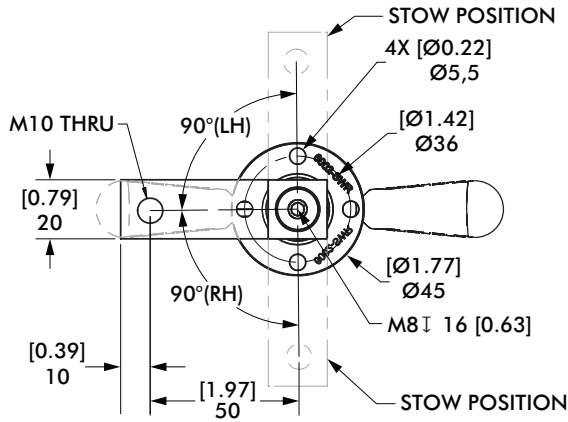
## Manual Swing Clamps | Product Overview and Dimensions

### 6002-SWL/SWR



6002-SWL

6002-SWR



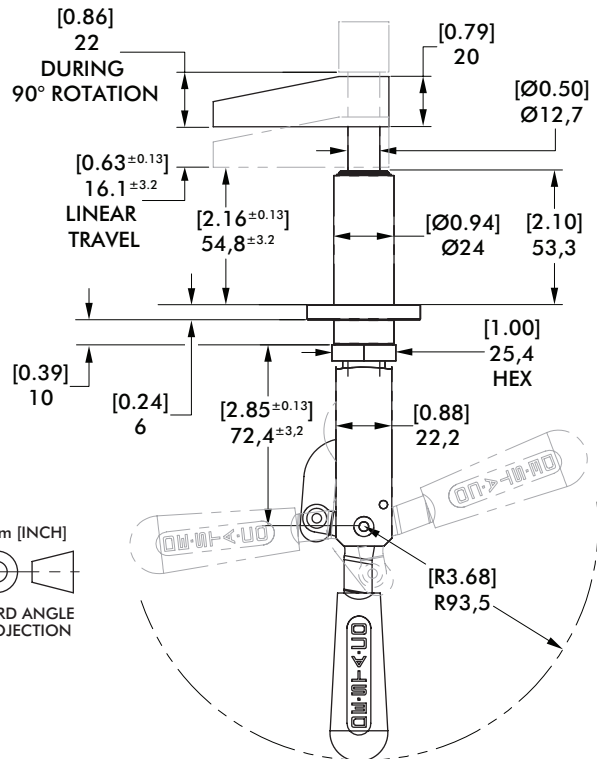
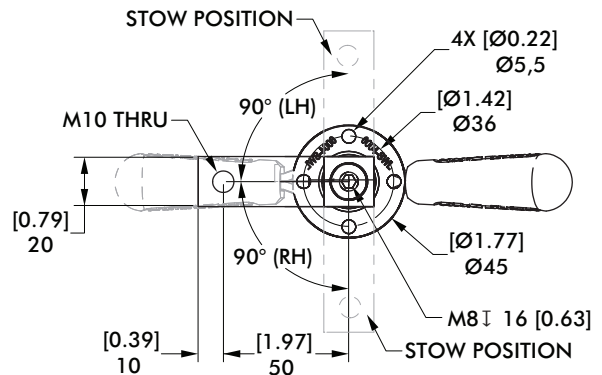
mm [INCH]  
THIRD ANGLE PROJECTION

### 6004-SWL/SWR



6004-SWL

6004-SWR



mm [INCH]  
THIRD ANGLE PROJECTION

Applied Force (on handle)	[lbs]	N	[25]	[20]	[15]	[10]
	111	89	67	44		
Plunger Pull Force (straight pull)	[360]	[288]	[216]	[144]		
	1601	1281	961	641		
Clamp Force (with arm shown below)	[229]	[189]	[149]	[108]		
	1019	841	663	480		

Applied Force (on handle)	[lbs]	N	[40]	[30]	[20]	[10]
	178	133	89	44		
Plunger Pull Force (straight pull)	[576]	[432]	[288]	[144]		
	2562	1922	1281	641		
Clamp Force (with arm shown below)	[323]	[269]	[189]	[108]		
	1437	1197	841	480		

Higher clamping forces than pneumatic version