

Service Manual

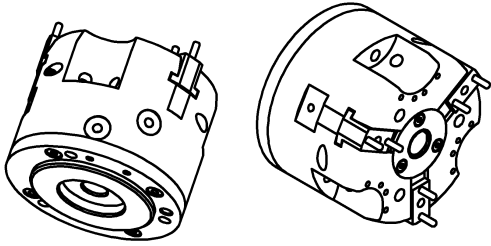
ROBOHAND | PPC Series



WARNING: This is a controlled document. It is your responsibility to deliver this information to the end user of the Destaco Robohand product. Failure to deliver this could result in your liability for injury to the user or damage to the machine. For copies of this manual, call your Customer Service Representative at 1.248.836.6700

PPC SERIES

Parallel Grippers | Maintenance and Assembly Procedure



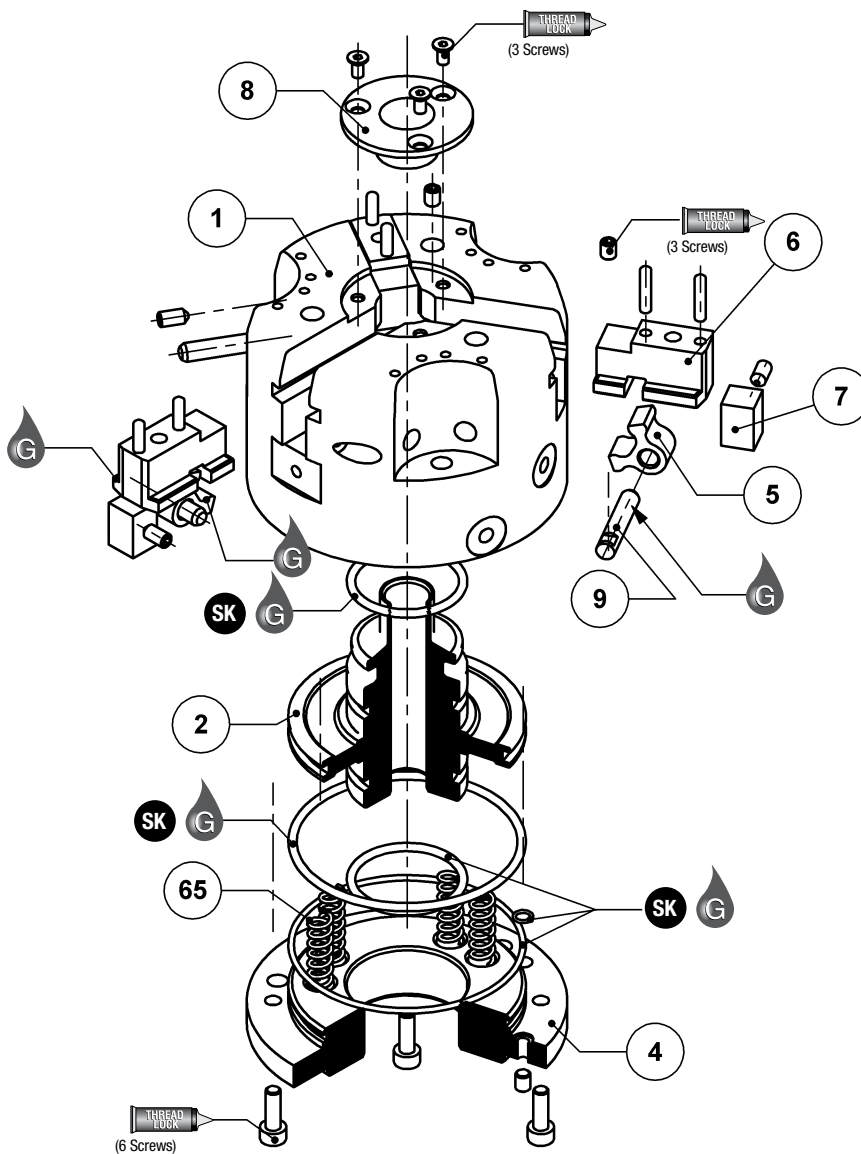
Item	Qty	Name
01	1	Body
02	1	Cam Driver Piston
04	1	Cap
05	3	Cam Lever
06	3	Jaw
07	3	Cover
08	1	Shielded Case
09	3	Pivot Pin
65	6	Springs

NOTE: Contact the Robohand Sales Department for a complete spare parts list with order numbers and prices.

Assembly Procedure

- 1) Lubricate and install the seals onto the cam driver piston
- 2) Lubricate and install the seals into the cap
- 3) Plug rear ports in the cap if rear inlets are not used. If rear inlets are used, plug body ports.
- 4) Insert the piston into body. Place springs into counterbore holes between the body and the piston for **-RE** option or between the piston and the cap for **-RI** option
- 5) Assemble the cap
- 6) Insert together the jaw and the cam lever into the body
- 7) Insert the pivot pin aligning cam lever hole. Screw SS Screw into the body for preventing pivot pin from moving
- 8) Assemble the cover
- 9) Assemble the shielded case

SK Seal Repair Kit Order #'s
See Product Data Sheets



Seal Kit Items



Thread Locker



Krytox™ Lubricant



Lightweight Machine Oil



Teflon™ Based Grease

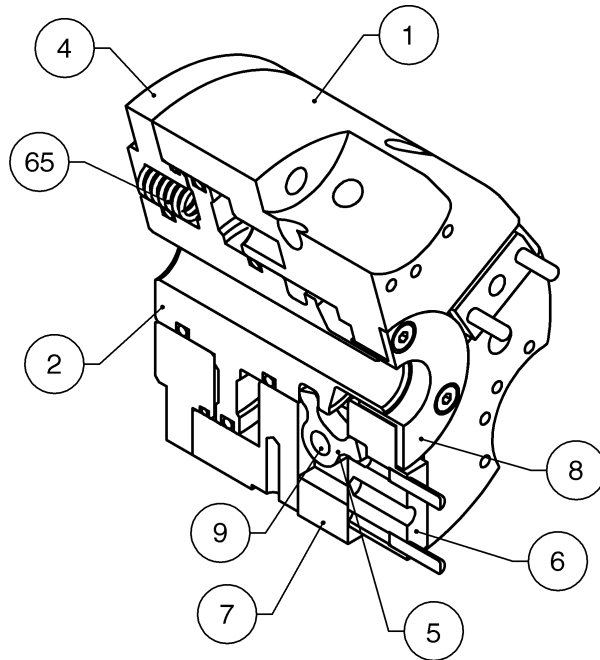


Super Bonder



Third Angle Projection

Item	Qty	Name
01	1	Body
02	1	Cam Driver Piston
04	1	Cap
05	3	Cam Lever
06	3	Jaw
07	3	Cover
08	1	Shielded Case
09	3	Pivot Pin
65	6	Springs

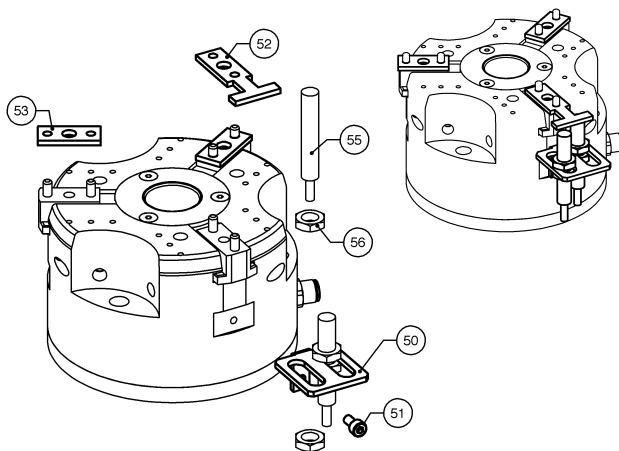


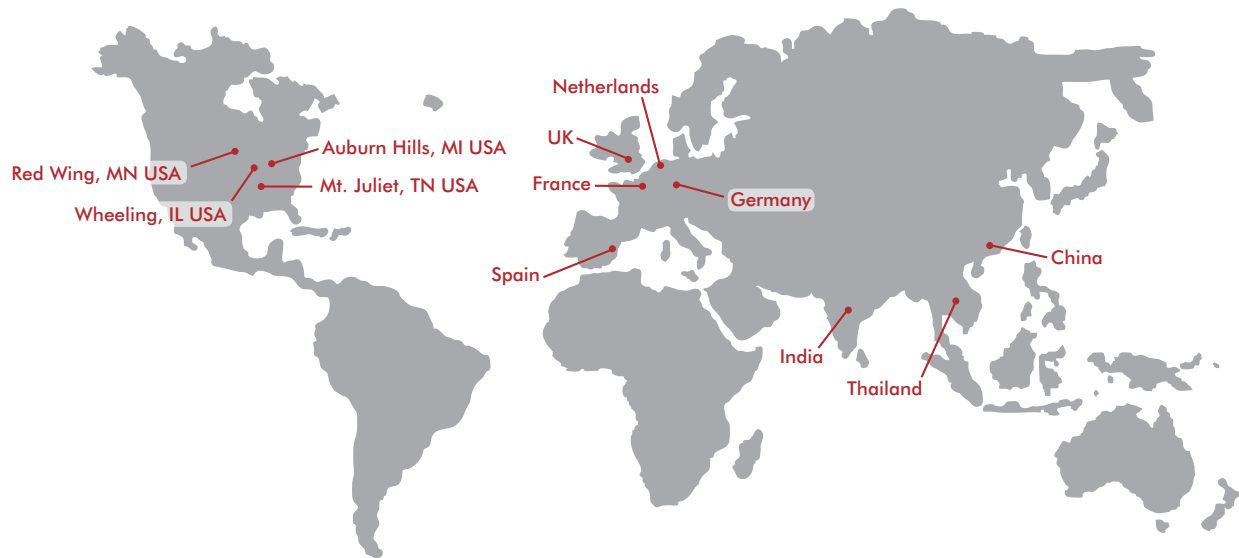
NOTE: Contact the Robohand Sales Department for a complete spare parts list with order numbers and prices.

Accessory Installation & Adjustment Instructions

Installation-Inductive Sensor

- 1) Assemble the sensor holder (#50) onto the gripper
- 2) Place the flag (#52) on one of the jaws above the sensor holder
- 3) Place the spacer (#53) on the other jaws
- 4) Position sensor for desired stroke position
- 5) Tighten sensor locking nuts (#56) to hold sensor depth
- 6) Repeat these operations in case of the use of two sensors holders





GLOBAL LOCATIONS

NORTH AMERICA

Corporate Headquarters

Auburn Hills, Michigan
Toll Free: 1.888.DESTACO
Marketing: marketing@destaco.com

Global Technology Center

Auburn Hills, Michigan
Tel: 1.248.836.6700
Customer Service: customerservice@destaco.com

Mt. Juliet, Tennessee
Tel: 1.888.DESTACO
Customer Service: customerservice@destaco.com

Wheeling, Illinois
Tel: 1.800.645.5207
Customer Service: camco@destaco.com

Red Wing, Minnesota (Central Research Laboratories)
Tel: 651.385.2142
Customer Service: sales@centres.com

ASIA

Bangkok, Thailand
Tel: +66-2-326-0812
Customer Service: info@destaco.com

Shanghai, China
Tel: +86-21-6081-2888
Customer Service: china@destaco.com

Bangalore, India
Tel: +91-80-41123421-426
Customer Service: india@destaco.com

EUROPE

Oberursel, Germany
Tel: +49-6171-705-0
Customer Service: europe@destaco.com

Sainte Florine, France
Tel: +33-4-73545001
Customer Service: france@destaco.com

Wolverhampton, United Kingdom
Tel: +44-1902-797980
Customer Service: uk@destaco.com

Sant Boi de Llobregat, Spain
Tel: +34-936361680
Customer Service: spain@destaco.com

Uithoorn, Netherlands
Tel: +31-297285332
Customer Service: benelux@destaco.com